



# TANGLED ROSE

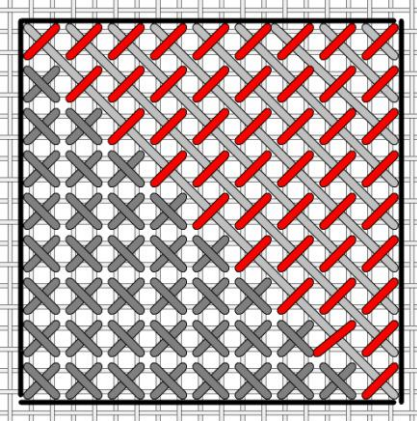
an original Needlepoint project from Blue Dogwood Designs

**MAY 2011 TANGLED ROSE #5**

	25	24		15	16	17
	23	22	1	2	18	19
	21	20	3	4	11	12
		7	6	5	13	14
		8	9	10		

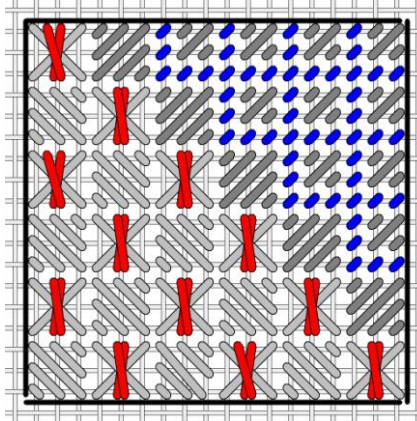


**Square 20**



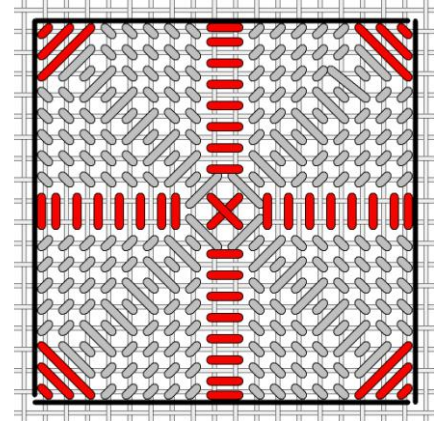
Dark gray: Vineyard silk c003 Hope  
 Light gray: Kreinik 003 red – lay the length  
 Red: Threadworx 1089 dark red

**Square 21**



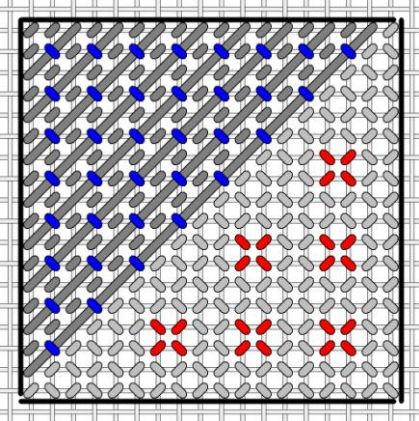
Dark gray: Floche 666 red  
 Blue: Threadworx 1089 dark red  
 Light gray: Floche 920 cinnamon  
 Red: Kreinik 003 red

**Square 22**

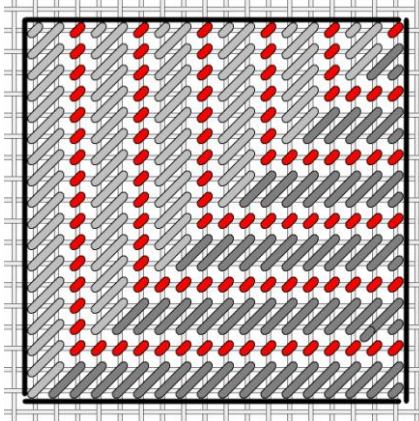


Red is Kreinik 9192 ribbon peach  
 Gray: Floche 893 coral NOTE direction change for tent stitches

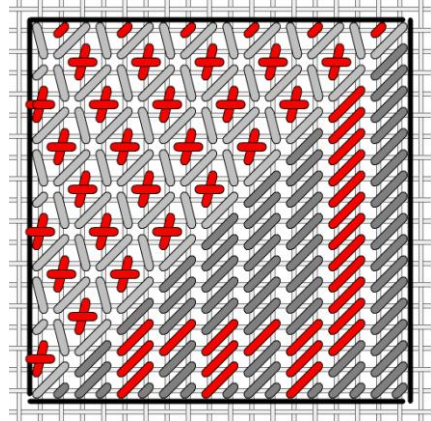
**Square 23**



**Square 24**



**Square 25**



Light gray: Vineyard silk c005 pink  
 Red: Kreinik 024 #12 br fuschia  
 Dark gray lay the long with Threadworx 1089 dark red  
 Blue: Kreinik 003 red  
 Dark gray tent stitches with Threadworx 1089

Light gray: GA Bittersweet OD apricot  
 Dark gray: Floche 666 red  
 Red: Kreinik 9192 ribbon peach  
 Watch that light gray and red side... the angles have slight "lean"

Square 24  
 Light gray: Floche 920 cinnamon  
 Dark gray: Threadworx 1089 dark red  
 Red: Kreinik 003 red

Questions? Email me at [Email@BlueDogwoodDesigns.com](mailto:Email@BlueDogwoodDesigns.com)

Thanks,

[www.BlueDogwoodDesigns.com](http://www.BlueDogwoodDesigns.com)