



TANGLED ROSE

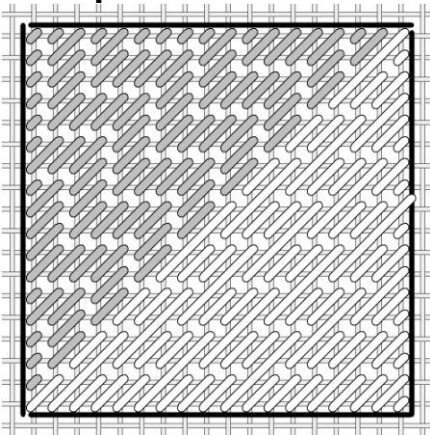
an original Needlepoint project from Blue Dogwood Designs

JUNE 2011 TANGLED ROSE #6

			29	30		
			27	28		
	25	24	26	15	16	17
	23	22	1	2	18	19
	21	20	3	4	11	12
		7	6	5	13	14
		8	9	10		

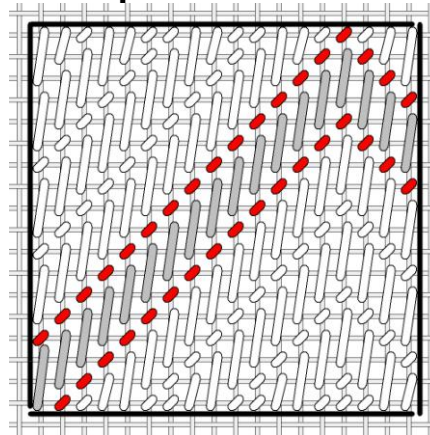


Square 26



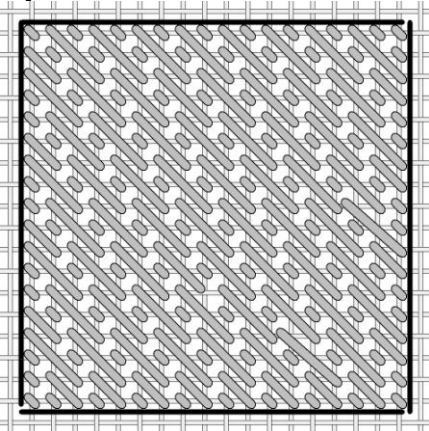
Dark gray: Threadworx 1089 dark red
 White: Floche 666 - red

Square 27



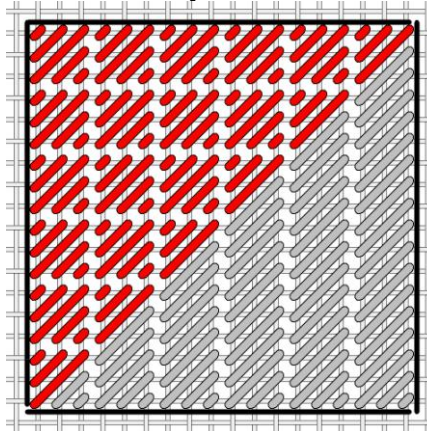
Work the dark gray first in Vineyard Silk Hope
 Red tent stitches are Kr 024 #12 Br rose
 Then all white stitches follow pattern with vineyard silk Hope Hot pink.

Square 28



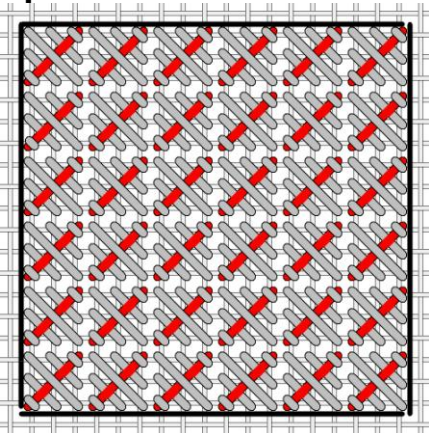
All Threadworx 1089 dark red
All solid Nobuko stitch !!!

Square 29



Red : NN OD 191
Gray : Floche 920

Square 30



Woven Scotch stitch
Red : Kr 024 rose #12 braid
Grey : Floche 666 – red

Questions? Email me at Email@BlueDogwoodDesigns.com

Thanks,

www.BlueDogwoodDesigns.com