



TANGLED ROSE

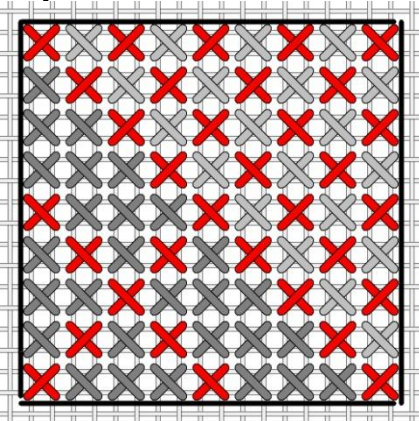
an original Needlepoint project from Blue Dogwood Designs

OCTOBER 2011 TANGLED ROSE #10

			29	30	31	32	33
			27	28	34	35	36
	25	24	26	15	16	17	
	23	22	1	2	18	19	
	21	20	3	4	11	12	
46	43	7	6	5	13	14	
45	44	8	9	10	37	38	39
51	50	49	48	47	40	41	42

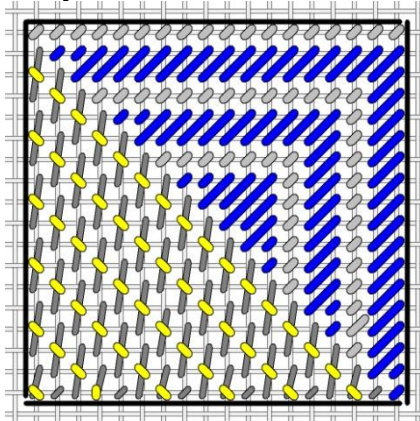


Square 47



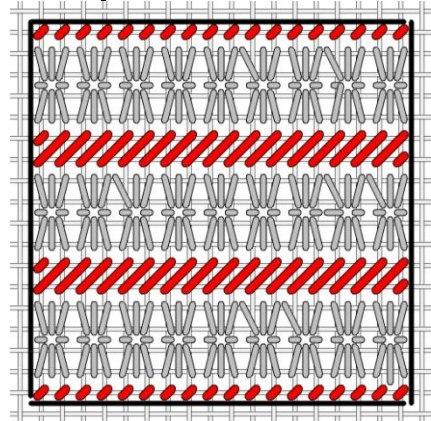
Light gray: Threadworx 1089 dark red
 Red: Kr 024 rose
 Dark Gray: Floche 605 pink

Square 48



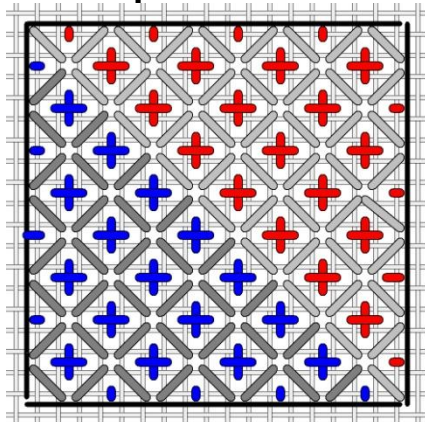
Gray: Gentle Arts Bittersweet
 Blue: Threadworx 1089 dark red
 Yellow: Kr 9192 peach

Square 49

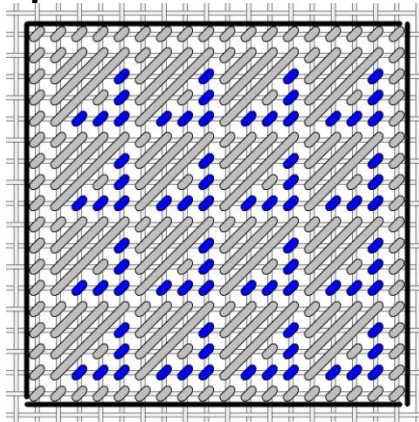


Gray: Floche 666 red
 Red: Kr 003 red

Square 50



Square 51



Light gray: Threadworx 1089 dark red
Red: Kr 003 red
Dark gray: NN 191 OD
Blue: Kr 024 rose

Gray: Vineyard silk Hope
Blue: Kr 9192 ribbon peach

Questions? Email me at Email@BlueDogwoodDesigns.com

Thanks,

www.BlueDogwoodDesigns.com