

CAThedral

an original Needlepoint project from Blue Dogwood Designs



July 2013



See the larger picture on last page.

Area 7

Just starting? Either draw your canvas from the instructions January 2013 Stitchguide or purchase a line drawn canvas for \$21 plus shipping.

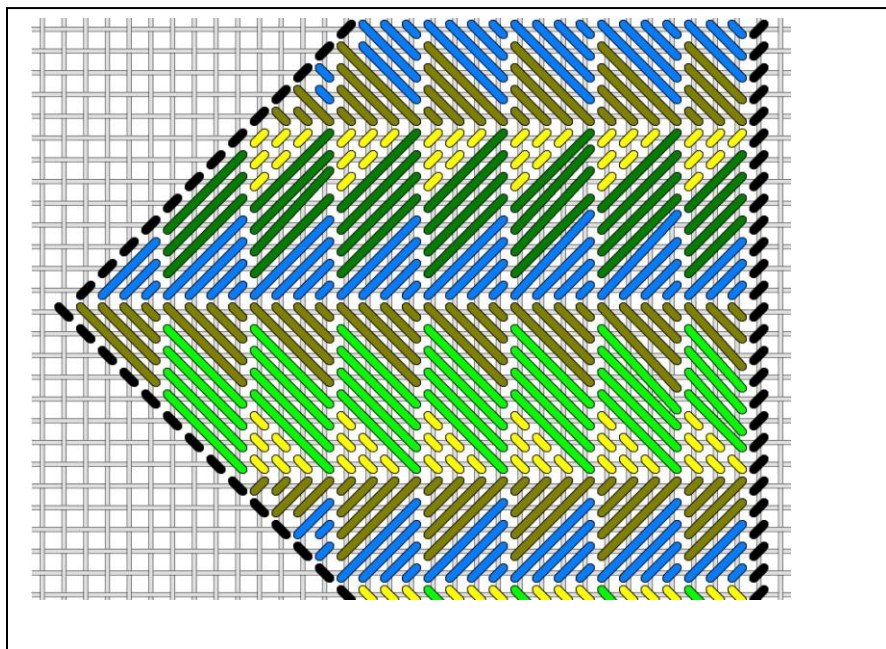
<https://bluedogwooddesigns.com/product/cathedral/>

Facebook has group called **CAThedral by Kay**.

Area 7

Diagram colors	Thread	Color	Floss color
Yellow	Kreinik 002J #12 Br	Bright gold *	gold
Medium green	Trio Grasshopper T145 1 ply	Medium frog green	Anchor 256
Light green	Floche 907 4 ply	Hot apple green	Anchor 255
Blue	Mandarin Floss M888 4 ply	Medium blue	Anchor 433
Olive green	Kreinik 1/16" ribbon 2829	Gold,green,blue	glitzy

* - Blue typing indicates previously used thread



Start at the point with the Kreinik 2829 ribbon and lay it flat for a great glitzy look. Stitch to the right edge. The column at the right edge is only 3 wide.

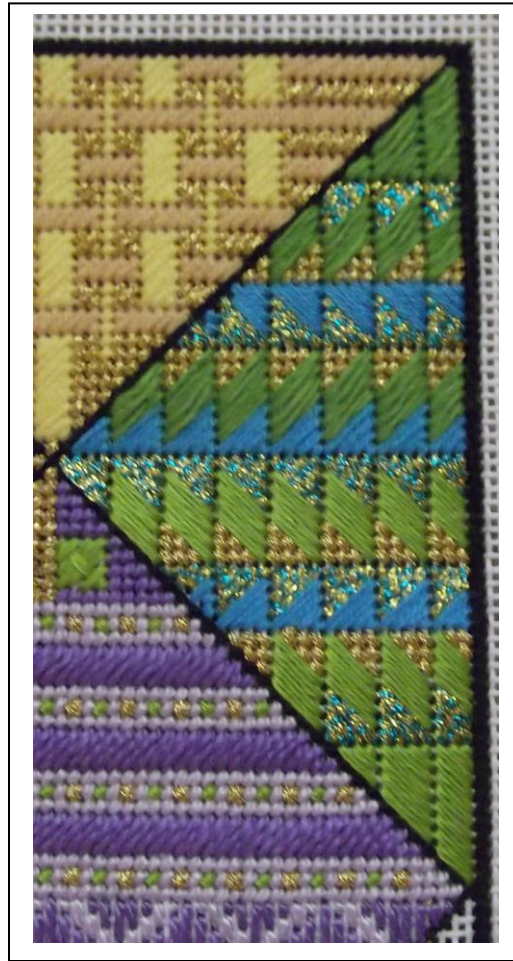
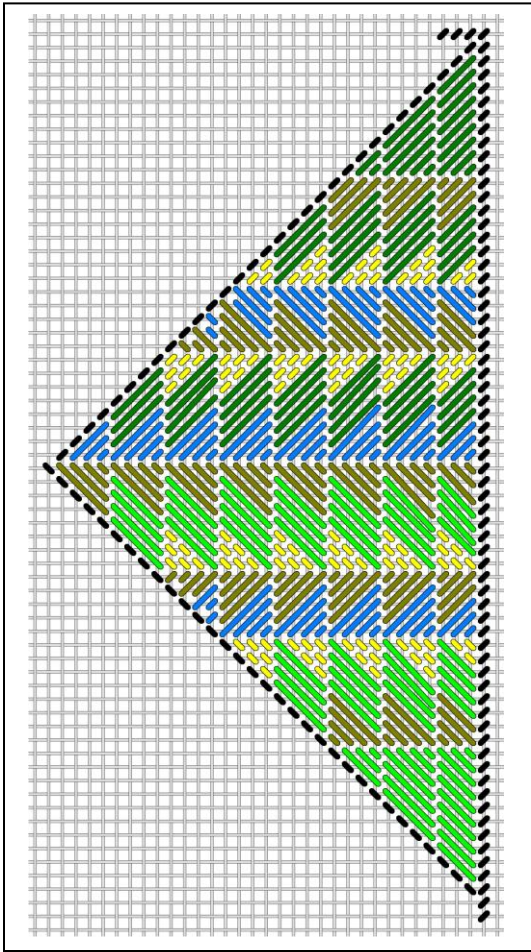
Then stitch the layers below, working down to that all green Floche 907. Watch the edges - see how those stitches are compensated.

When you start at the point with the blue Mandarin M888, watch that first area - it is not the same size as the lower glitzy Kreinik. Then work the layers up to the top with the darker green Trio color accent.

Floche is 4 ply, Mandarin is 4 ply to cover.

The center 6 columns have patterns over 4.

Watch the stitch direction slant - they change!!



Best, My best friends are stitchers,

Kay @ Blue Dogwood Designs

Questions? Email me at Email@BlueDogwoodDesigns.com