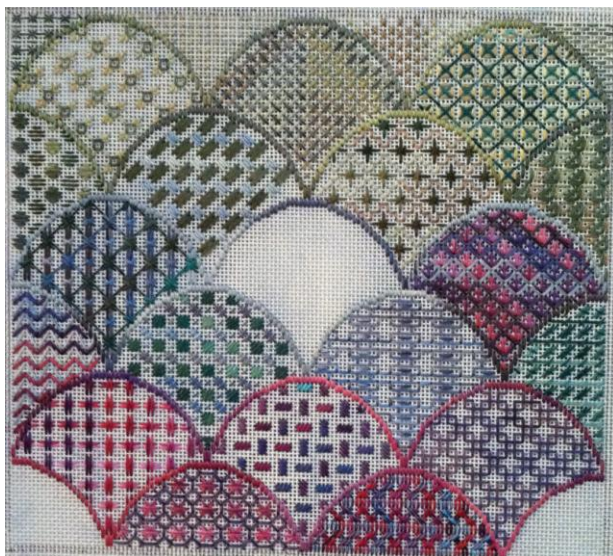


Sashiko Sampler

an original Needlepoint project from Blue Dogwood Designs



October 2014



October - 4 partial shells for this month!

You can start this project with this instruction and monthly stitchguide free to download.

If you would like the canvas marked and ready to go, order here:

https://bluedogwooddesigns.com/featured_item/sashiko/

I am using Zweigart Vintage Blue 18 count canvas, which has a washed overdye look. Some of the canvas will show as the design continues.

Finished size is 8.25 in x 7.5 in on 18 count.

Fibers are from Valdani - they have 6 ply silk and 3 ply cotton, sold in small balls. Check your local needlepoint store.

Have fun with this stitchguide or modify on your own.

This project will unfold over the next 12 months. The shell design is inspired by a traditional Sashiko pattern. The shells will be filled with designs inspired by blackwork, open work and lacey backgrounds. A sampler to try different patterns in tiny bits.

You can use your own canvas and stitch the outline from January 2014 Stitchguide.

Here is the order of the shells.



Step by step

Threads needed:

Shell 20

O526 6 ply silk

Shell 21

JP9 6 ply silk

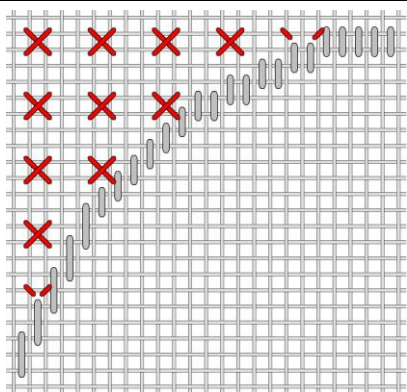
Shell 22

O526 3 ply cotton

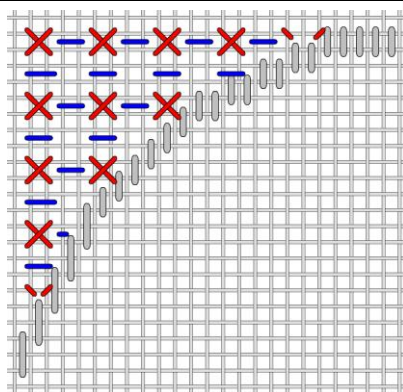
Shell 23

O526 6 ply silk

Shell #20



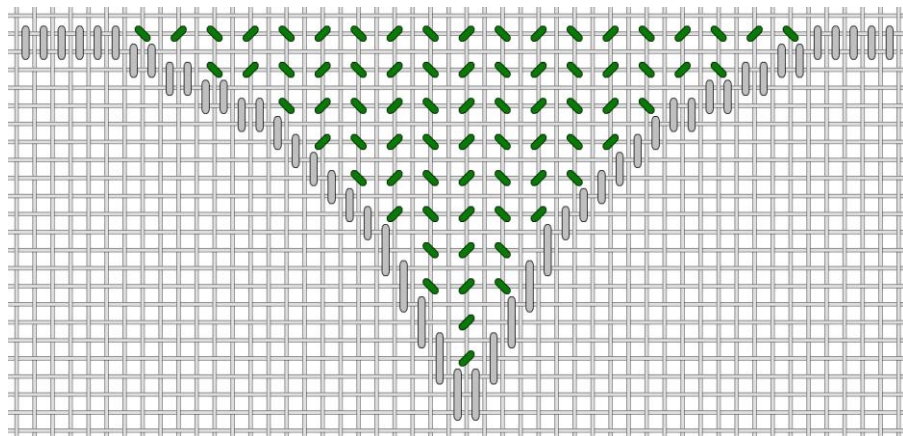
O526 6 ply silk - use 4 ply



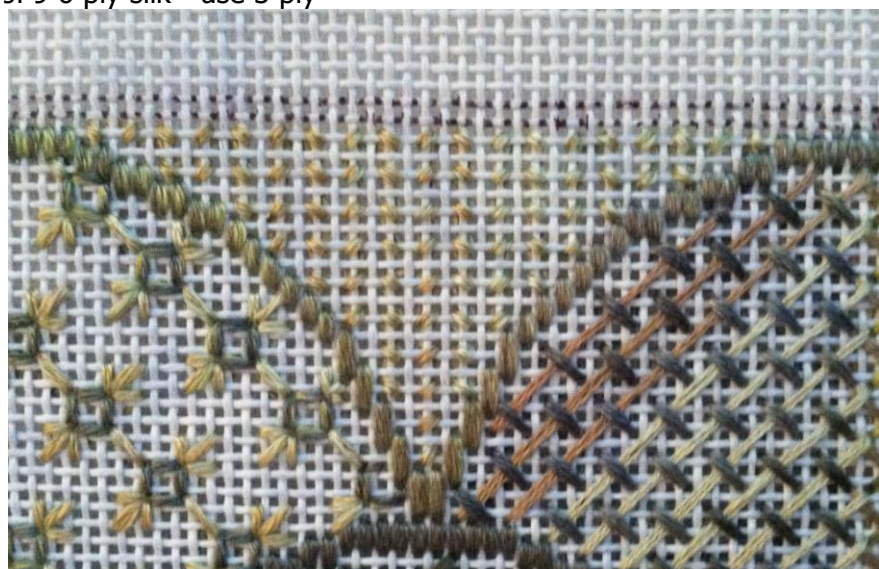
O526 6 ply silk - use 2 ply



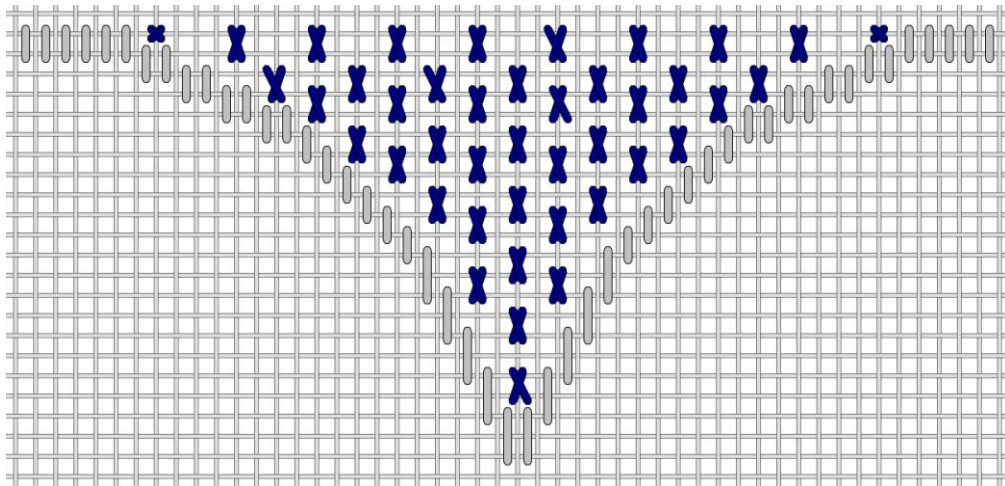
Shell #21



JP9 6 ply silk - use 3 ply



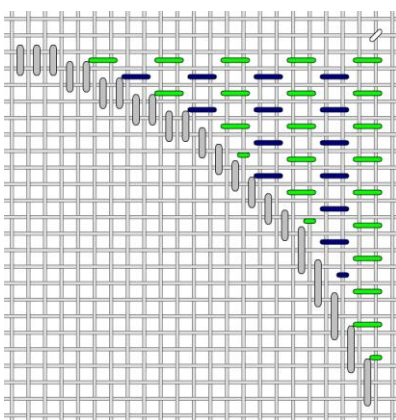
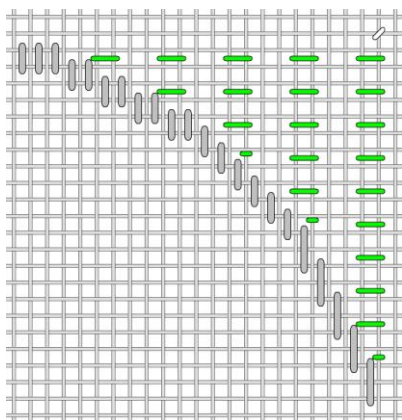
Shell #22



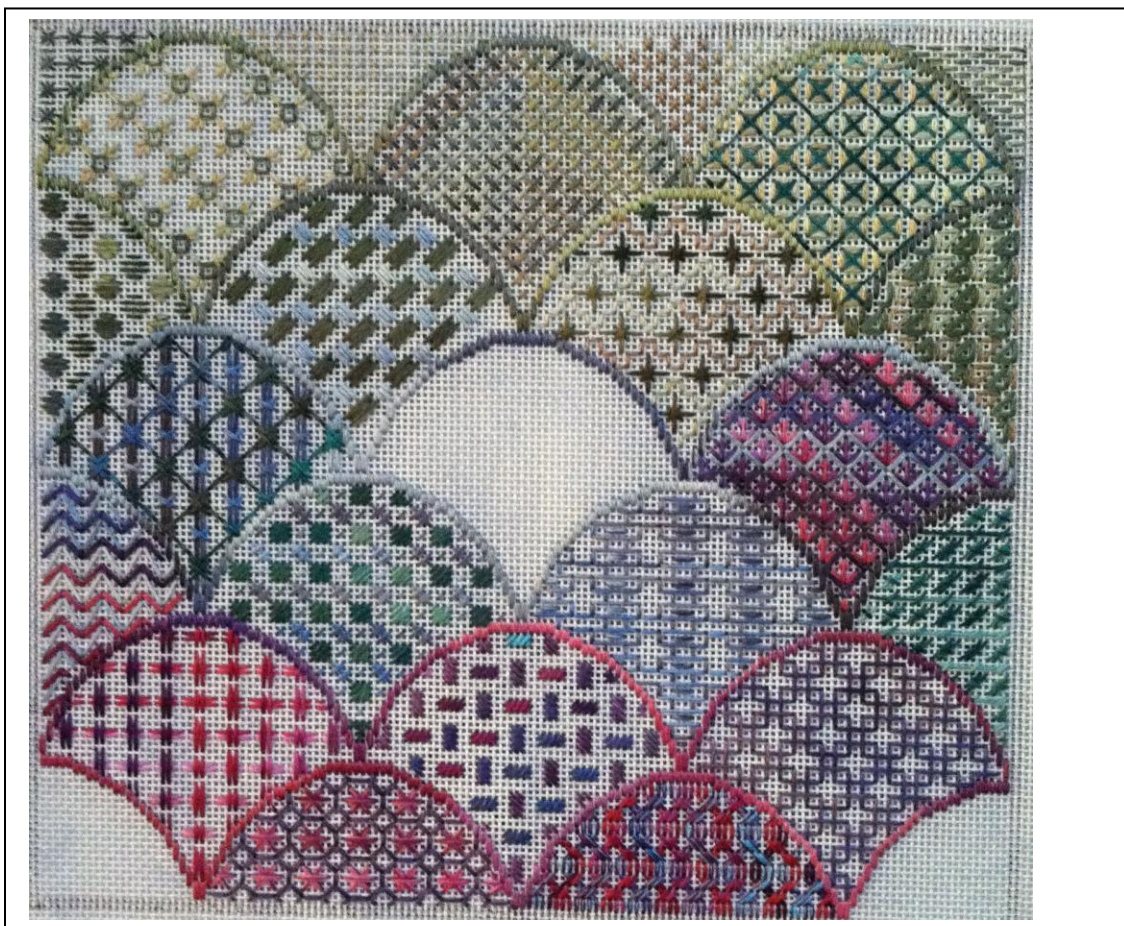
O526 3 ply cotton - use all 3 ply just as it comes off ball.



Shell #23



O526 6 ply silk - Green on diagram use 5 ply of this silk. Then with blue stitches on diagram use 3 ply of this silk.



Best, My best friends are stitchers,

Kay @ Blue Dogwood Designs

Questions? Email me at Email@BlueDogwoodDesigns.com