

My Blue Quilt

an original Needlepoint project from Blue Dogwood Designs



January 2019



My Blue Quilt

The new 2019 monthly cyber mystery class!

This year: 13 count, cut and go threads, a mix of Planet Earth Silk and River Silks ribbon with a sparkle of silver Kreinik.

3 squares each month. Bright, vivid, rich colors. The picture does not do the richness and depth of the colors justice.

Threads are listed below.

Order the canvas only or the full kit:

<https://bluedogwooddesigns.com/elements/pages/stitchguides/>

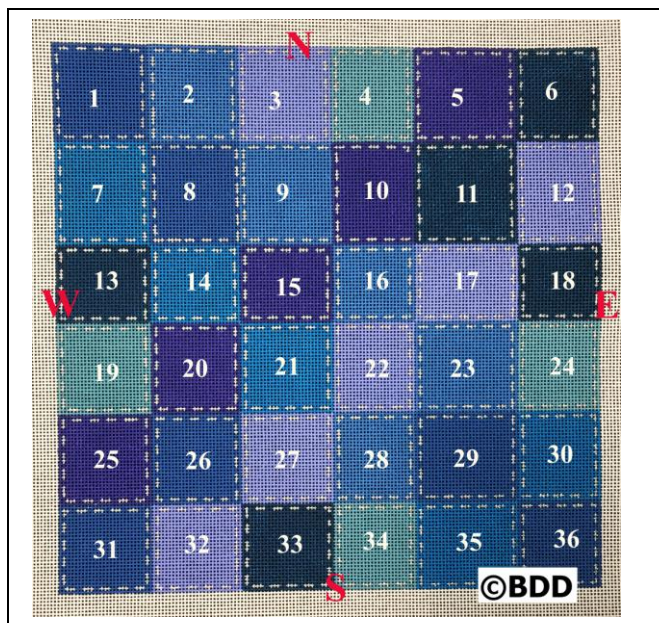
Finished size is 12 in x 12 in on 13 count.

Best,
Kay
Blue Dogwood Designs

These are the threads in the kit:

Thread	Color	Quantities in kit
Kreinik 1/16" ribbon	Silver	3
River Silks 4mm #204	Dark Purple	2
River Silks 4mm #57	Light Purple	2
Planet Earth Cactus #201	Sage Green	1
Planet Earth Mediterranean #079	Dark Teal	2
Planet Earth Caribbean #078	Medium Teal	2
Planet Earth Malibu #087	Bright Turquoise	2
Planet Earth Graphite #188	Dark Blue-green	2

Canvas has been cut to 17 in x 17 inches. Put on 17 stretcher bars or cut down to fit 16's. **Be sure to center the canvas design if you are cutting down to 16's.**



BIG NOTE: If you trim the bottom signature off, mark the top "N", mark "E", "W", "S". The squares are not the exactly the same size. Sometime "N" will be up, sometimes another direction will be up. Since the squares are not of equal widths, these directional changes make a big difference.

The silver "sewing stitches" are not identical for every square... **this is especially true for square #8.** **The right side of #8 the "sewing stitches" is on that last row. This is by design, not a painting mistake, the stitching will fit in that space.**

Starting in the middle for January with Square #16, 15, and 22 - those are the hardest to reach when on stretcher bars. As we move around the canvas, there will be instructions how to turn the canvas. Above you see North is top. In future stitchguides, direction on top will be specified. This just makes it easier to stitch the squares closer to you.

The Kreinik silver is tent stitches for all the "sewing stitches". To jump ahead, with just tent, you can stitch the silver that are the "sewing stitches". The outer line for each patchwork is tent stitching with Planet Earth. The Planet Earth can fill inbetween the "sewing stitches". All stitching of different squares will be inside this "sewing stitches" line. All done with North up.

Follow this rule:

Squares 6, 11, 13, 18, 33 - Planet Earth Graphite

Squares 1, 8, 26, 29, 31, 36 - Planet Earth Mediterranean

Squares 3, 12, 17, 22, 27, 32 - River Silks 4 mm #57 Light Purple

Squares 4, 19, 24, 34 - Planet Earth Cactus

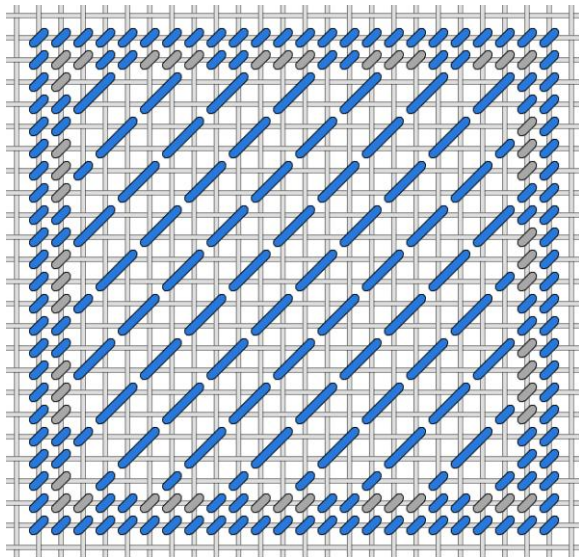
Squares 5, 10, 15, 20, 25 - River Silks 4mm #204 Dark Purple

Squares 7, 14, 21, 30, 35 - Planet Earth Malibu

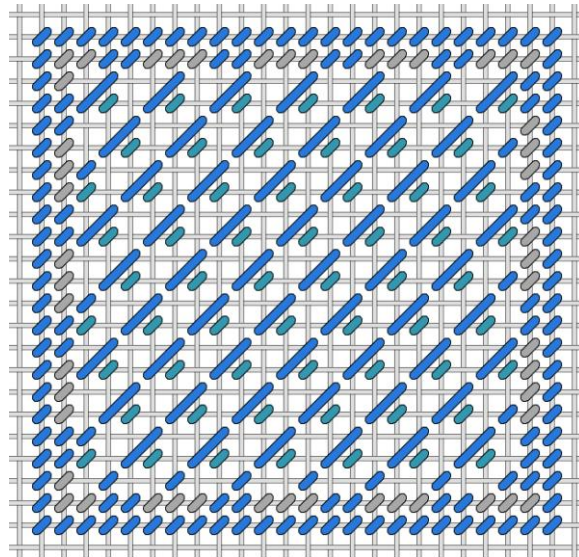
Squares 2, 9, 16, 23, 28 - to be discussed individually

See Square #15 on next page for starting with ribbon: locking onto needle and video link.

Square #16 - North is up. Stitch outside tent line with Mediterranean, then "sewing stitches" with silver and Mediterranean in tent. Blue stitches with Mediterranean, teal stitches with Caribbean.

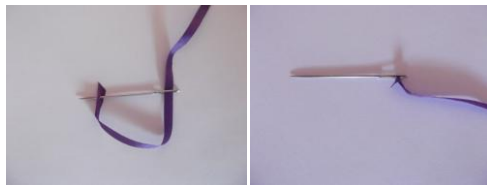


Step 1 with Mediterranean



Step 2, add teal stitches with Caribbean

Square #15 - River Silks 4mm #204 Dark Purple - North is up



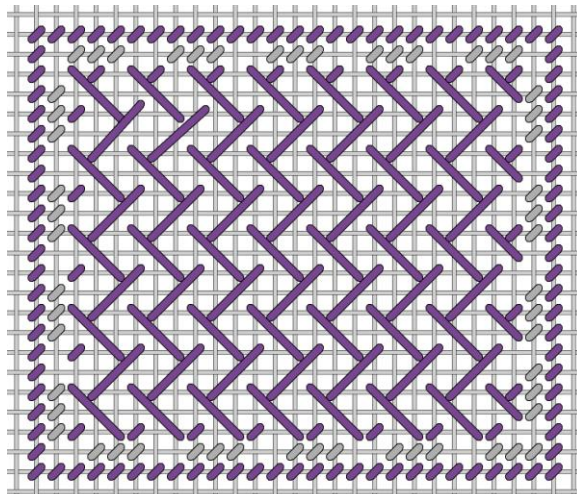
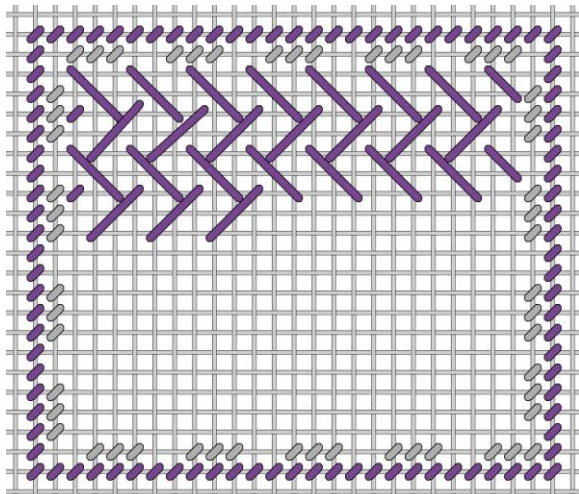
Lock ribbon on needle:

Thread needle, pierce tip of ribbon 1/4 inch from tip. Tapestry needle is just fine. Pull on long end. Ribbon locks onto needle. No slipping out. To lock onto canvas, start the patterned stitch and pierce the ribbon on the backside 1/2 inch from the end. Ribbon will not fray. Ribbon is locked onto canvas, no need to hold on back and stitch over or stitch over a waste knot. This technique saves ribbon.

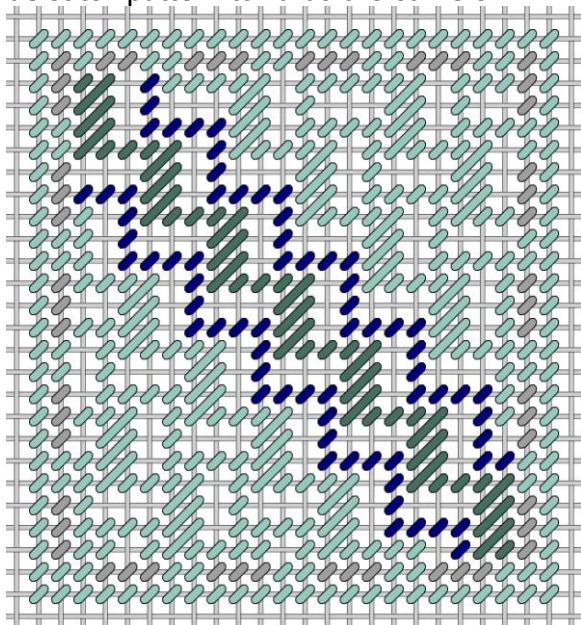
Video here: [Ribbon Lock Video](#)

Start pattern at top left, working left to right, then second row. I filled in the smaller tent edge stitches afterwards. Graph does not show the ribbon tent stitches in line with silver - but they should be stitched.

BIG NOTE: Keep ribbon flat on front, flat on back, be easy with tension. Look closely at pattern, like herringbone, not woven. See pix next page.



Square # 34 - North is up. Planet Earth Cactus Stitch the dark green pattern first, then the lines of blue stitches, all with the Cactus color. The dark green pattern repeats on either side, as does the dark blue stitch pattern towards the corners.



Square 34



Square 15

Square 16

Best, My best friends are stitchers,

Kay @ Blue Dogwood Designs
425 931 3111

Questions? Email me at
Email@BlueDogwoodDesigns.com