



TANGLED ROSE

an original Needlepoint project from Blue Dogwood Designs

This project will unfold with directions each month to complete an 8 x 8 inch square design on 18 count canvas. Thread suggestions with alternate floss color guide and stitch guide is included. The first stitchguide is for 4 – 1 " squares in the center of your canvas. Each subsequent stitchguide will add 4,5 or 6 design squares – 12 monthly segments total.

Materials:

- Zweigart 18 ct. ecru or white canvas 14" x 14"
- Two pairs of 14" stretcher bars
- #22 and #24 tapestry needles
- Masking tape or Seams Great

Canvas preparation:

With either white or ecru 18 count canvas, cut a 14 inch square piece.

The design is 8 inches square; this will give you 3 inches on each side for your stretcher bars. Tape the edges or sew on Seams Great to prep your edges to prevent thread snags.

Mark the top of the canvas close to your stretcher bars with a waterproof pen; this orientation will be important as we add more squares.

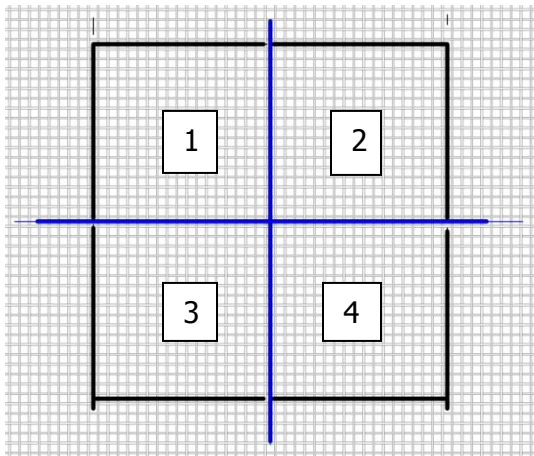
Find the center of the canvas and draw a vertical and horizontal line in the channel/ditch and not on the threads (Figure 1 in blue lines). This will mark your center where we will begin stitching. Each month, the new stitchguide will expand out from the previously stitched squares. Each square is 18 threads square = 1 inch. All squares will be right next to each other – in other words, they will share the channel/ditch but there is no separating tent stitch.

Threads: There are 9 colors and 3 Kreinik colors. You can mix and match from your stash the vendor threads and the Anchor floss equivalents. Floss is generally used with 4 of 6 ply. Floche is used 2 ply. Wildflowers is used 2 ply. Your tension and vertical /horizontal stitches will also dictate whether to ply up.

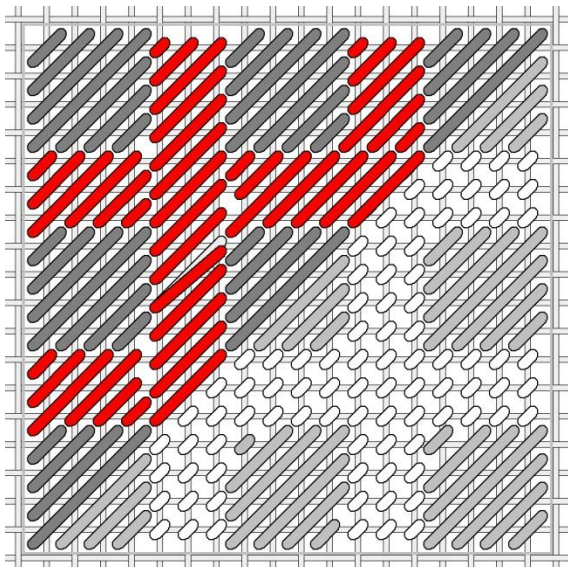
	Thread	Anchor Floss Equivalent	color
1	Threadworx OD Floss 1089	43	Dark red
2	Floche 666	46	Med red
3	Floche 893	33	Coral
4	Needle Necessities OD 191	99	Magenta/rose
5	Vineyard Silk C-003 Hope	86	Hot pink
6	Floche 605	1094	Light pink
7	Floche 920	340	Nutmeg
8	Gentle Arts Bittersweet OD floss	1002	Apricot
9	Caron Wildflowers 95 Flamingo	8	Light peach
10	Kreinik 003 #12 Braid		Red
11	Kreinik 024 #12 Braid		Fuschia
12	Kreinik 9192 1/16" ribbon		Peach

JANUARY 2011 TANGLED ROSE #1

Squares 1,2,3 and 4 (Figure 1 outlined in black)

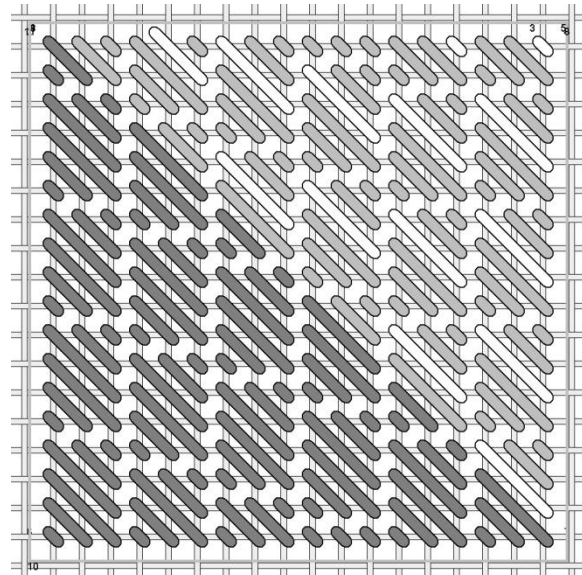


Square 1



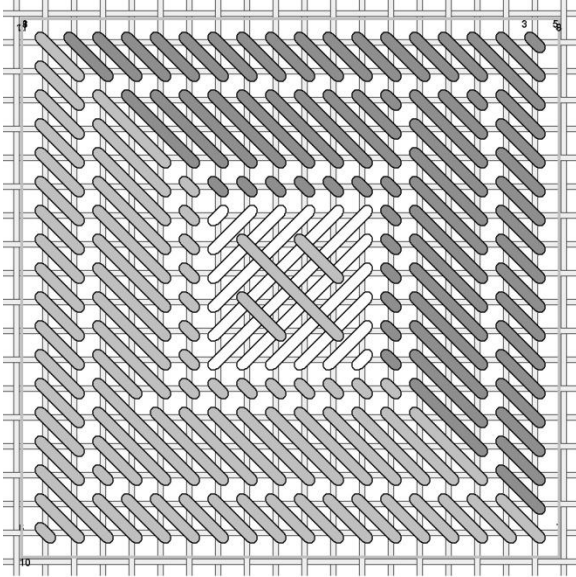
Dark gray: Dark red Threadworx OD 1089 (43)
 Red: Red Floche 666 (46)
 Medium gray: Nutmeg Floche 920 (340)
 White: Red Kr #12 Braid 003

Square 2



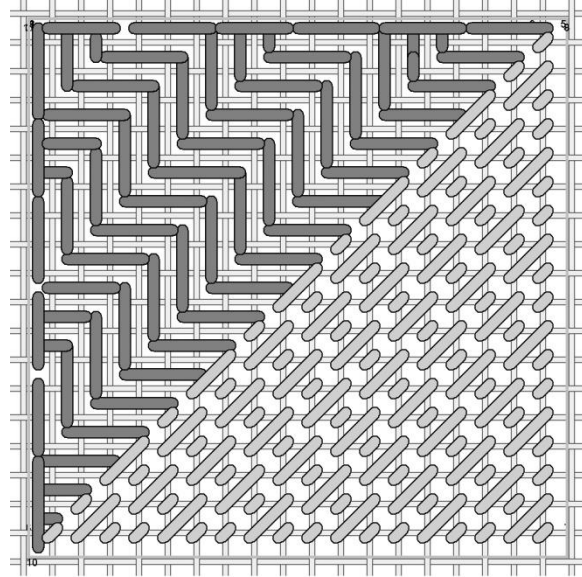
Dark gray: Dark red Threadworx OD 1089 (43)
 Medium gray: Hot pink Vineyard Silk (86)
 White: Rose Kr #12 Br 024

Square 3



Dark gray: Magenta/rose NN OD 191 (99)
Medium gray: Hot pink Vineyard silk (86)
White: Rose Kr #12 024

Square 4



Dark grey: Red Floche 666 (46)
Medium gray: Hot pink Vineyard silk (86)

Have fun with the stitches, enjoy the colors.... And stay tuned as the design unfolds.

Questions? Email me at Email@BlueDogwoodDesigns.com

Thanks,

www.BlueDogwoodDesigns.com