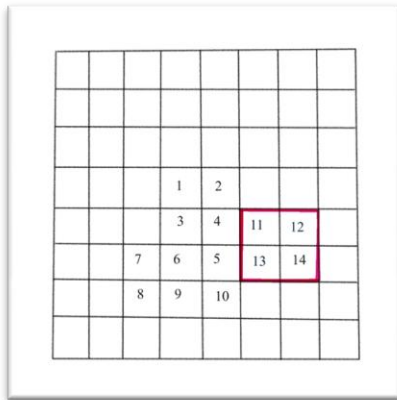




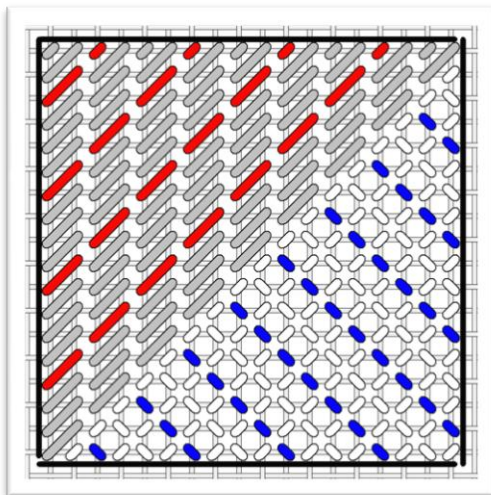
# TANGLED ROSE

an original Needlepoint project from Blue Dogwood Designs

## MARCH 2011 TANGLED ROSE #3

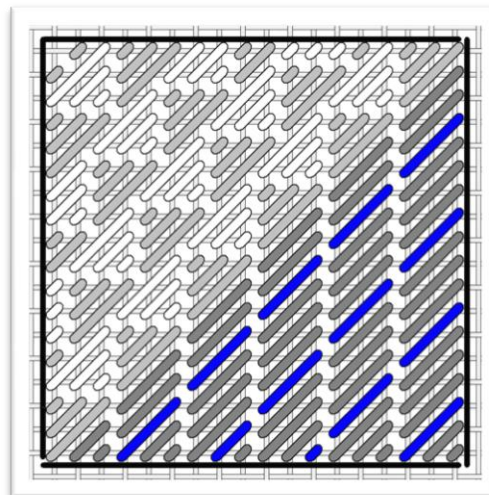


**HERE IS GRAPH PLACEMENT OF SQUARE 11, 12, 13 AND 14  
COMPLETED WITH 3 INSTALLMENTS  
A CLOSEUP OF SQUARE 11, 12, 13 AND 14**



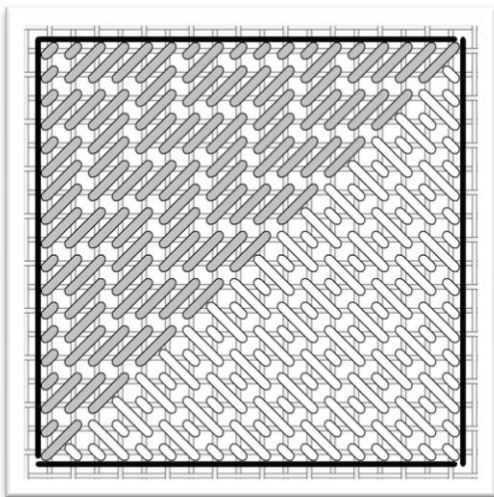
**11**

Grey: ThreadWorx 1089 dark red (43)  
Red: Kr 003 red #12 braid  
White: Caron Wildflowers 095 (8)  
Blue: Kr 9192 ribbon peach



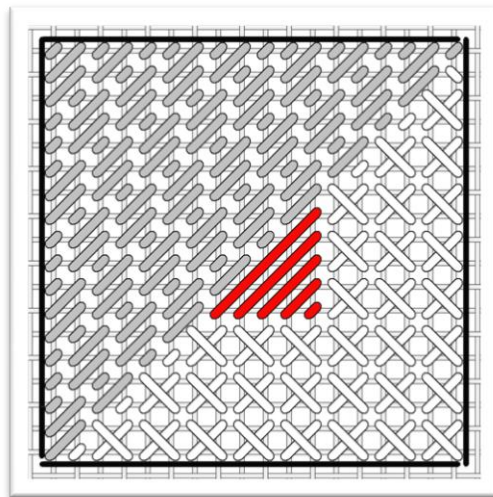
**12**

Grey: Floche 920 cinnamon (340)  
White: Floche 893 coral (33)  
Dark Grey: ThreadWorx 1089 dark red (43)  
Blue: Kr 9192 Ribbon peach



13

Grey: ThreadWorx 1089 dark red (43)  
White: Vineyard Silk c003 Hope hot pink (86)



14

Grey: GA Bittersweet OD floss (1002)  
White: Floche 666 red (46)  
Red: Kr 003 #12 Br red

The colors in parenthesis are Anchor floss equivalent. Have fun with the stitches, enjoy the colors and stay tuned.

Questions? Email me at [Email@BlueDogwoodDesigns.com](mailto:Email@BlueDogwoodDesigns.com)

Thanks,

[www.BlueDogwoodDesigns.com](http://www.BlueDogwoodDesigns.com)