



TANGLED ROSE

 an original Needlepoint project from Blue Dogwood Designs

APRIL 2011 TANGLED ROSE #4

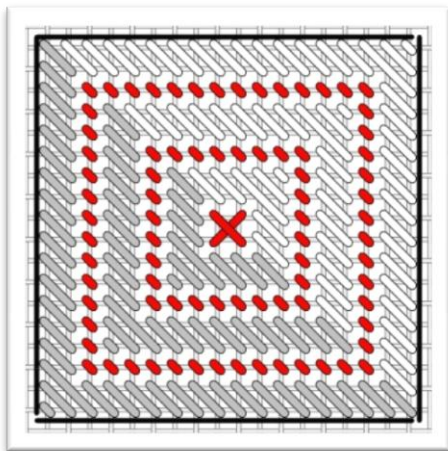


THIS IS HOW YOUR PIECE WILL LOOK AFTER COMPLETING THIS INSTALLMENT #4 FOR APRIL

				15	16	17			
		1	2	18	19				
		3	4	11	12				
		7	6	5	13	14			
		8	9	10					

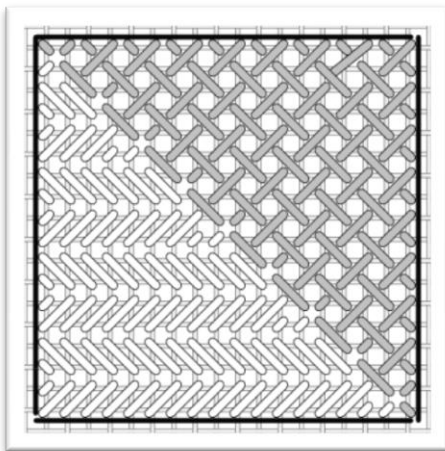


HERE IS GRAPH PLACEMENT OF SQUARE 15, 16, 17, 18, 19 AND CLOSE UP OF THESE 5 SQUARES



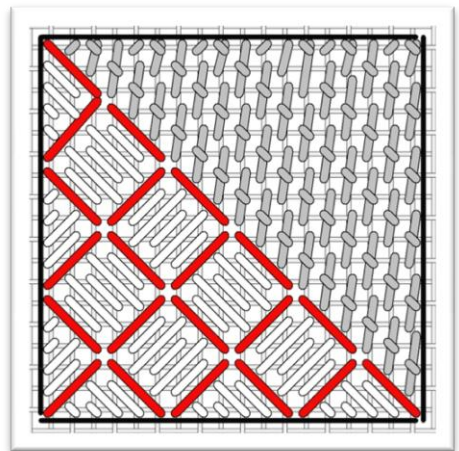
15

Grey: ThreadWorx 1089 dark red (43)
 Red: Kr #12 Br 003 red
 White: Floche 893 coral (33)



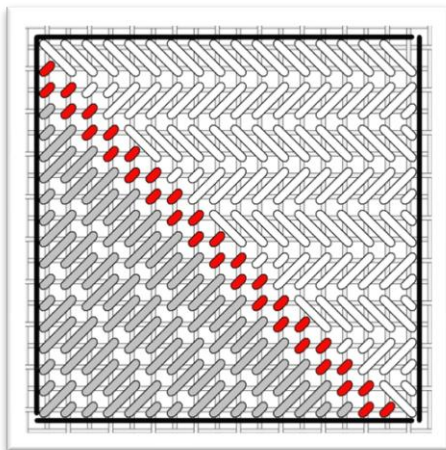
16

Grey: Threadworx 1089 dark red (43)
 White: Floche 666 red (46)



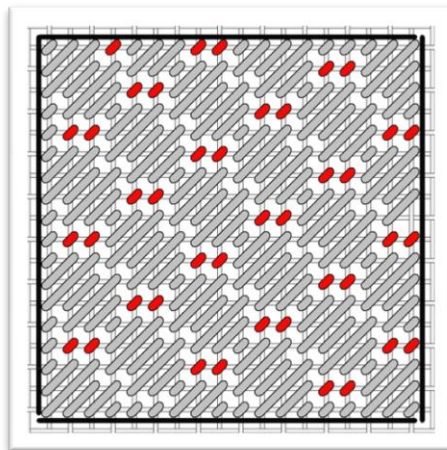
17

Grey: Threadworx 1089 dark red (43)
 White: GA Bittersweet floss (1002)
 Red: Kr ribbon 9192 peach



18

White: Floche 666 (46)
 Red: Kr Br #12 003 red



19

Grey: Threadworx 1089 dark red (43)
 Red: Kr Br #12 024 rose

The colors in parenthesis are Anchor floss equivalent. Have fun with the stitches, enjoy the colors and stay tuned.

Questions? Email me at Email@BlueDogwoodDesigns.com

Thanks,

www.BlueDogwoodDesigns.com