



TANGLED ROSE

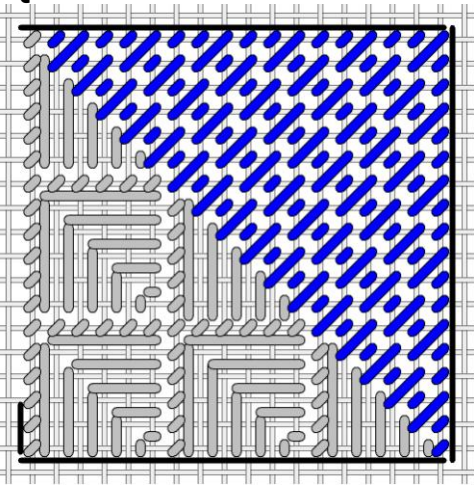
an original Needlepoint project from Blue Dogwood Designs

JULY 2011 TANGLED ROSE #7

			29	30	31	32	33
			27	28	34	35	36
	25	24	26	15	16	17	
	23	22	1	2	18	19	
	21	20	3	4	11	12	
		7	6	5	13	14	
		8	9	10			

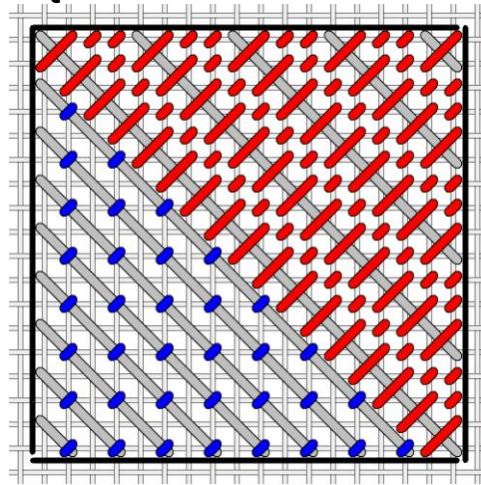


SQUARE 31



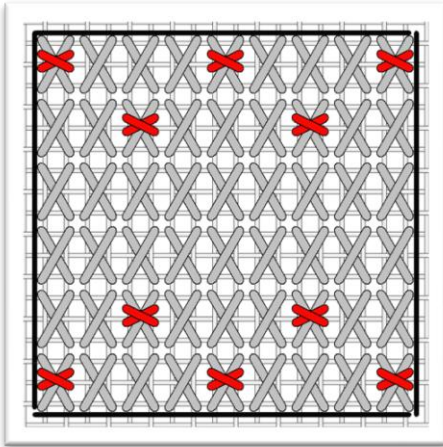
Gray: NN 191 OD
Blue: Threadworx 1089

SQUARE 32



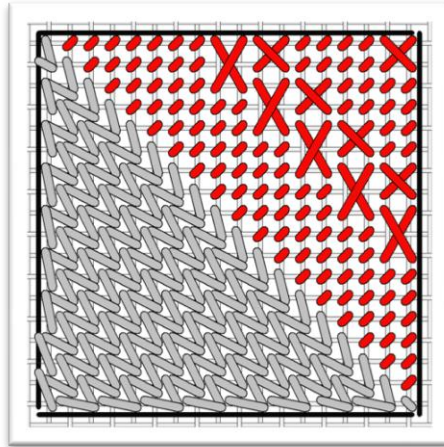
Gray: long laid Kr 1/16" ribbon 9192 peach
Blue: Caron Wildflowers Flamingo
Red: Floche 605 light pink

SQUARE 33



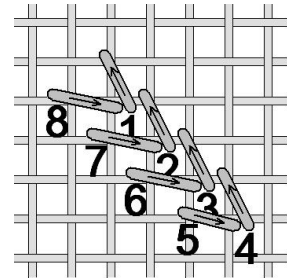
Gray: Threadworx 1089
Red: Kreinik 003 #12 Br

SQUARE 34



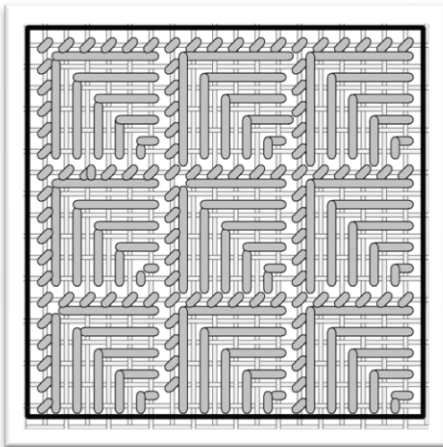
Gray: Vineyard silk. This stitch is called Diagonal Knitting... don't let this one throw you. See graph 34A
Red: Floche 920 cinnamon

GRAPH 34A



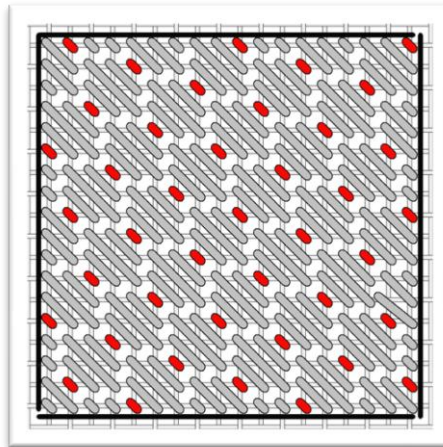
Follow the stitch sequence

SQUARE 35



All done in NN 191 OD
 Tent stitches are 4 ply
 Vertical and Horizontal stitches – ply up to 5

SQUARE 36



Gray: Floche 893 Coral
Red: Kreinik Ribbon 9192 peach

Questions? Email me at Email@BlueDogwoodDesigns.com

Thanks,



www.BlueDogwoodDesigns.com