



TANGLED ROSE

an original Needlepoint project from Blue Dogwood Designs

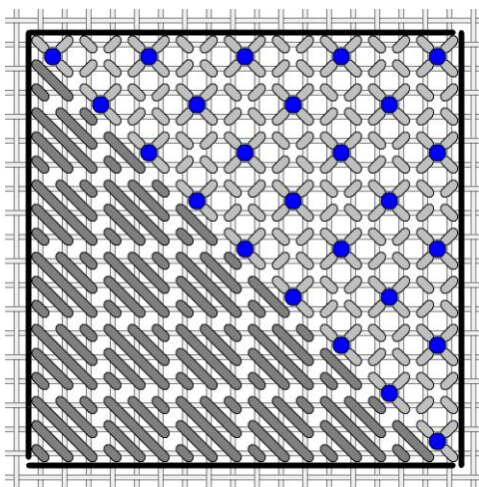
SEPTEMBER 2011 TANGLED ROSE #9

			29	30	31	32	33
			27	28	34	35	36
	25	24	26	15	16	17	
	23	22	1	2	18	19	
	21	20	3	4	11	12	
46	43	7	6	5	13	14	
45	44	8	9	10	37	38	39
					40	41	42

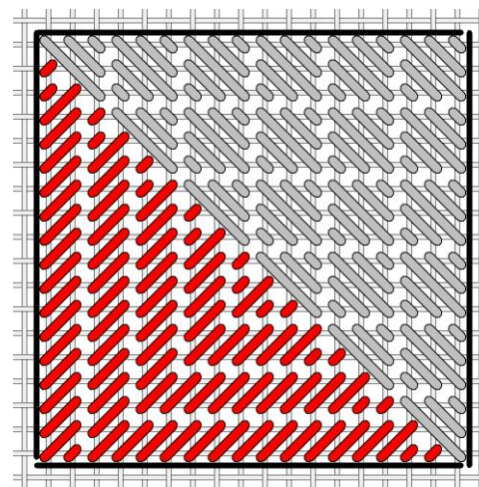


NOTE – Watch how these are numbered... I went clockwise but started closest to previous work.

Square 43



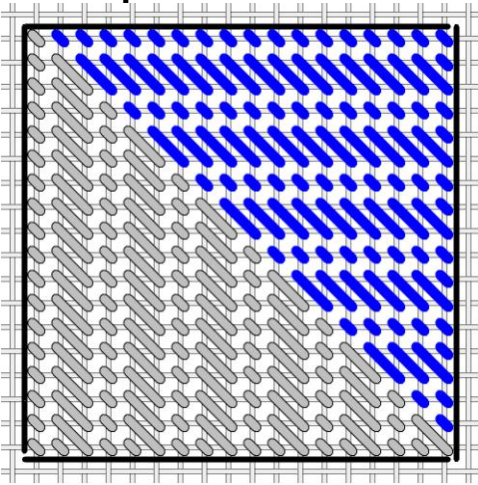
Square 44



Dark gray: Threadworx 1089 dark red
Light gray: NN 191 OD
Blue: French knots with Kr 024 rose

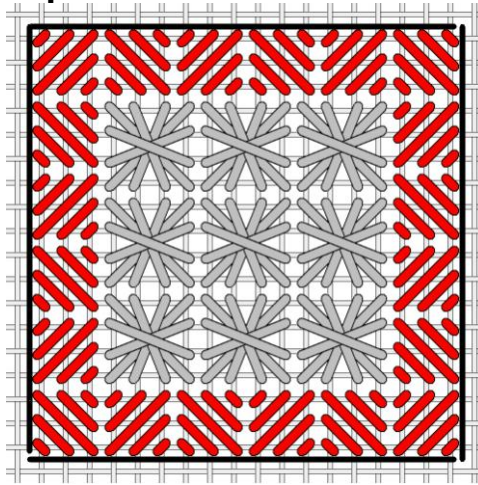
Dark gray: Floche 666 red
Red: GA Bittersweet OD – work the one column on the left first

Square 45



Blue : Threadworx 1089 dark red
Gray: Caron Wildflowers 95 flamingo

Square 46



Gray: Floche 605 pink
Red: Kr 1/16" ribbon 9192 peach

Questions? Email me at Email@BlueDogwoodDesigns.com

Thanks,

A stylized, cursive signature in blue ink that reads "Kay".

www.BlueDogwoodDesigns.com