

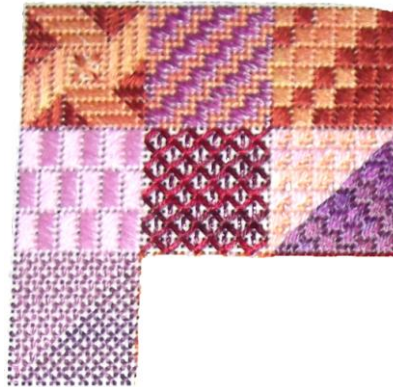


TANGLED ROSE

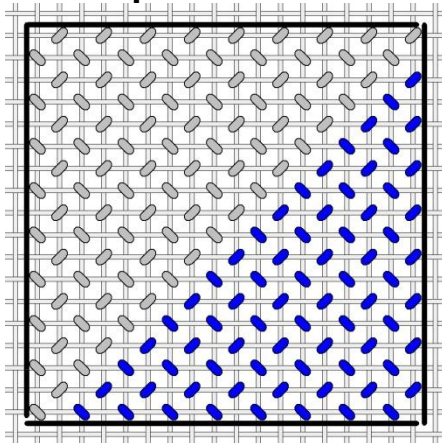
an original Needlepoint project from Blue Dogwood Designs

NOVEMBER 2011 TANGLED ROSE #11

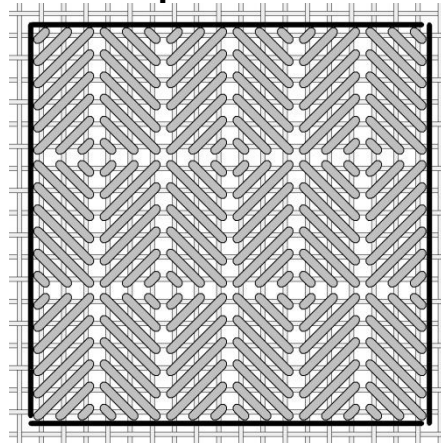
58	57	56	29	30	31	32	33
53	54	55	27	28	34	35	36
52	25	24	26	15	16	17	
	23	22	1	2	18	19	
	21	20	3	4	11	12	
46	43	7	6	5	13	14	
45	44	8	9	10	37	38	39
51	50	49	48	47	40	41	42



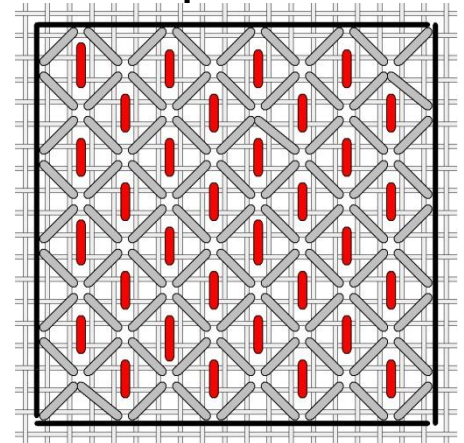
Square 52



Square 53



Square 54

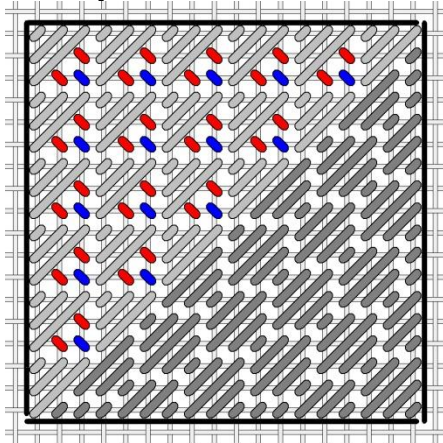


Grey – vineyard silk
Blue – NN 191 Overdye

Grey – floche 605 light pink

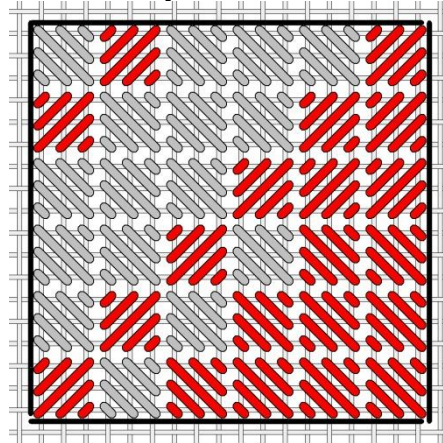
Grey – Threadworx 1089 dark red
Red – Kr 024 rose worked in vertical darning mode

Square 55



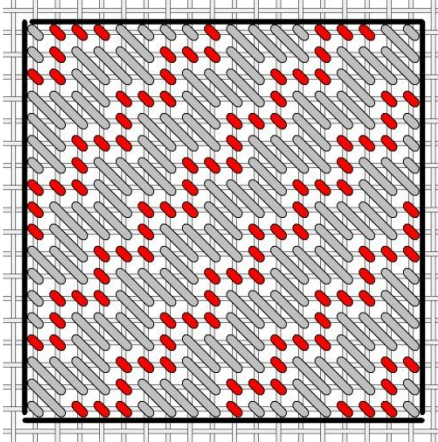
Light grey – Caron wildflowers
Red – GA Bittersweet
Blue – Kr 9192 peach ribbon
Dark grey – NN 191 od

Square 56



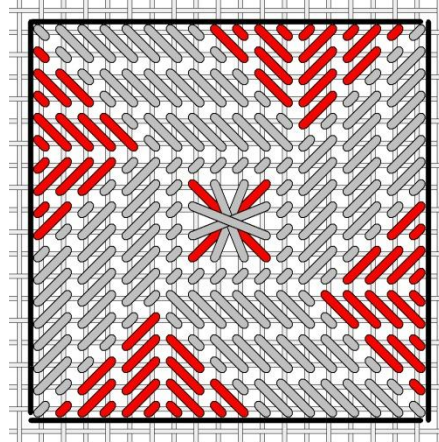
Grey – GA Bittersweet
Red – floche 920

Square 57



Grey – vineyard silk
Red – GA bittersweet OD

Square 58



Grey – GA Bittersweet – start with the tent stitches from the corners to the square in the center 6 tent stitches wide – watch the slants
Red – Floche 920

Questions? Email me at Email@BlueDogwoodDesigns.com
Thanks,

www.BlueDogwoodDesigns.com