

CAThedral

an original Needlepoint project from Blue Dogwood Designs



April 2013



Area 3 - Purple window!

Just starting? Either draw your canvas from the instructions January 2013 Stitchguide or purchase a line drawn canvas for \$21 plus shipping.

<https://bluedogwooddesigns.com/product/cathedral/>

Facebook has group called **CAThedral by Kay**. Send a note to join to Sandy of Peacock Alley or leave a note on facebook at Blue Dogwood Designs. We can add you to the discussion.

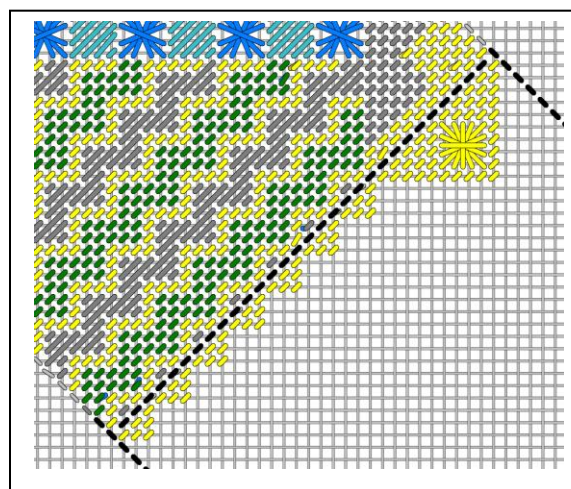
Thanks for following along. I love all the different pix of cats! Those gals that have branched off with a custom cat color: black with fuzzy stuff, grey and tan... Cute!

Welcome to the CAThedral project - Purple Area 3

Diagram colors	Thread Name	Thread Color	Floss color (Anchor unless noted DMC)
yellow	Kreinik 002J #12Br	Bright gold	Gold
Purple	Perle #5 #110	Medium purple	110
Lavender	Perle #5 #342	Light lavender	342
Green	Floche 907	Apple green	255

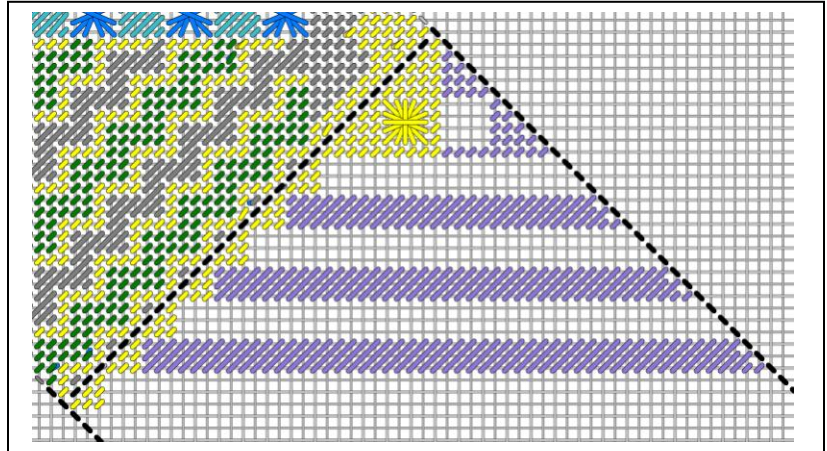
Step 1

On the left side and top left of this window, closest to the area already stitched last month. Use the Kreinik 002J for the yellow stitches. The pattern for the sun is Leviathan.



Step 2

Use Perle #5 color 110 Medium Purple
Tent stitches at the top of the window
and diagonal gobelin over 3 for the
three stripes.



Step 3 in progress

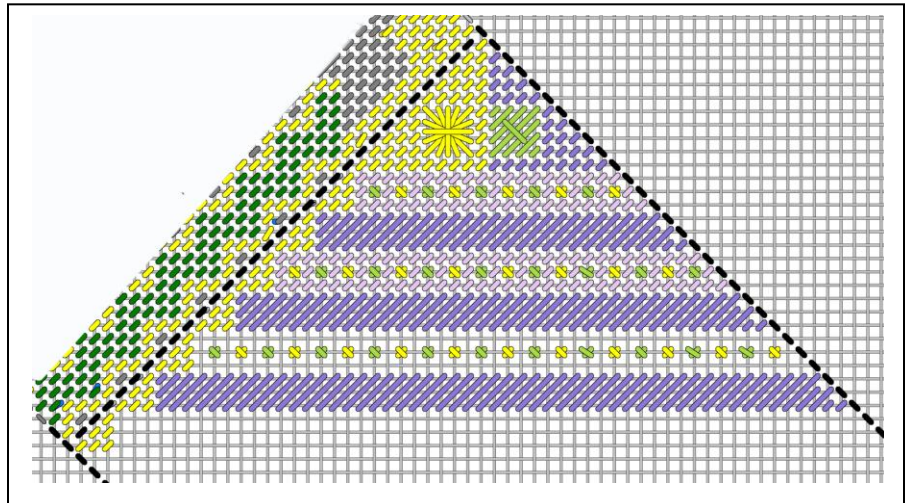
This step uses the Kreinik 002J and Green Floche 907 for simple crosses.

Stitch suggestion work the simple crosses first.

The green floche is used 2 ply.

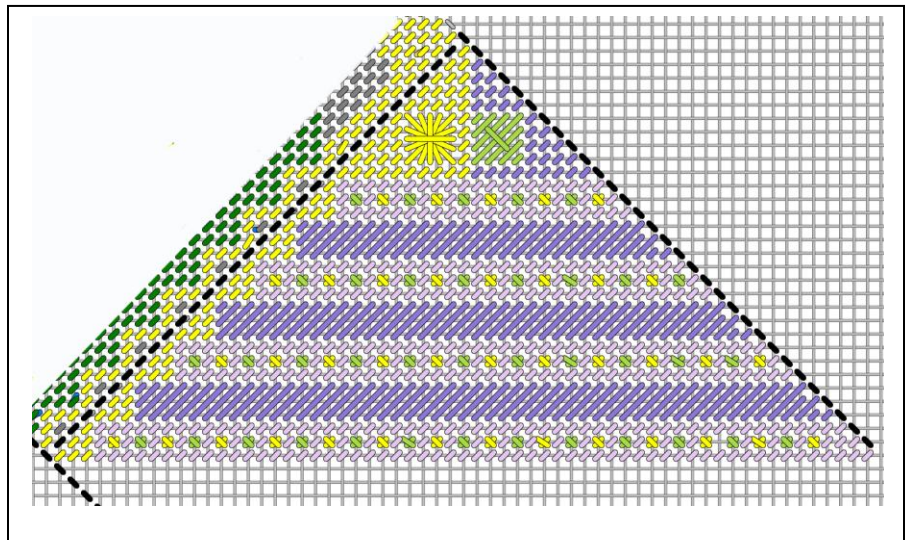
Perle #5 color 342 light lavender is all tent stitches to fill in.

See the third row without the lavender for a better look at that simple cross pattern.



Step 3 completed

It should look like this when done.



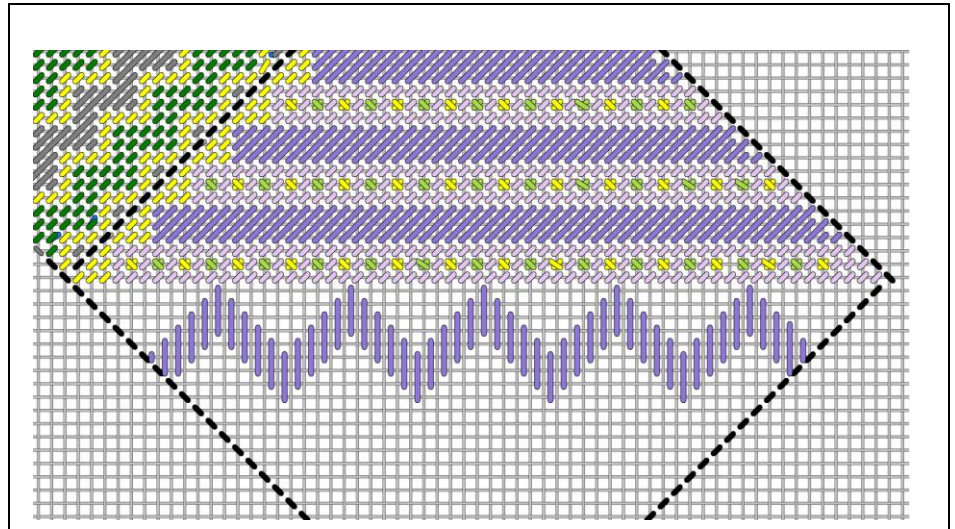
Step 4

****WATCH OUT ** TRICKY****

This is not exactly centered.
See there is stitch over 1 on the left and the
stitch over 2 on the right.

You can start in the middle and work
to the left, work to the right.
This centering will set up all rows that
follow. **See diagram in Step 6 for the
ultimate goal.**

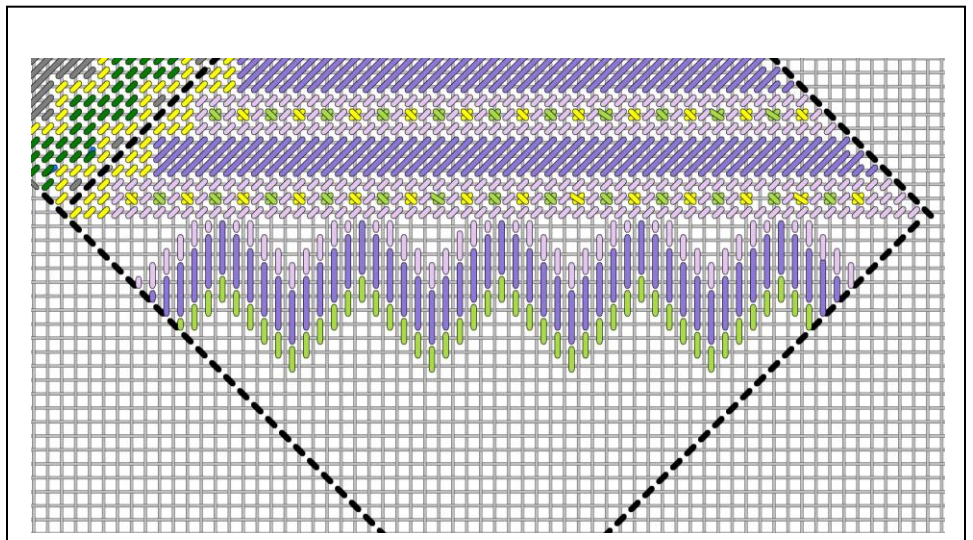
Use the Perle #5 medium purple 110
Vertical over 4 threads.



Step 5

Use Green floche 907 3 ply vertical over 2
just underneath this pattern from Step 4.
Because of the vertical nature, ply up to 3.

Use Perle #5 light lavender 342 vertical
over 2 above Step 4 pattern.

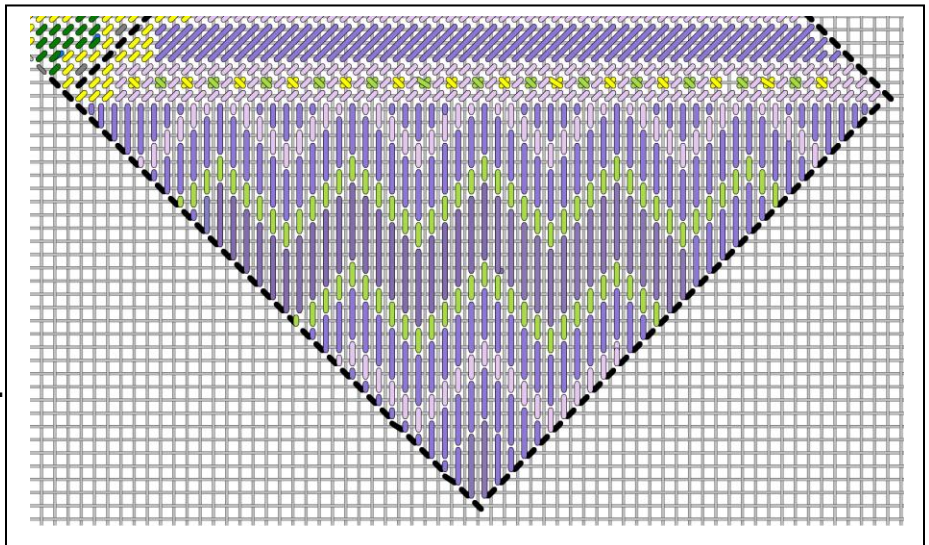


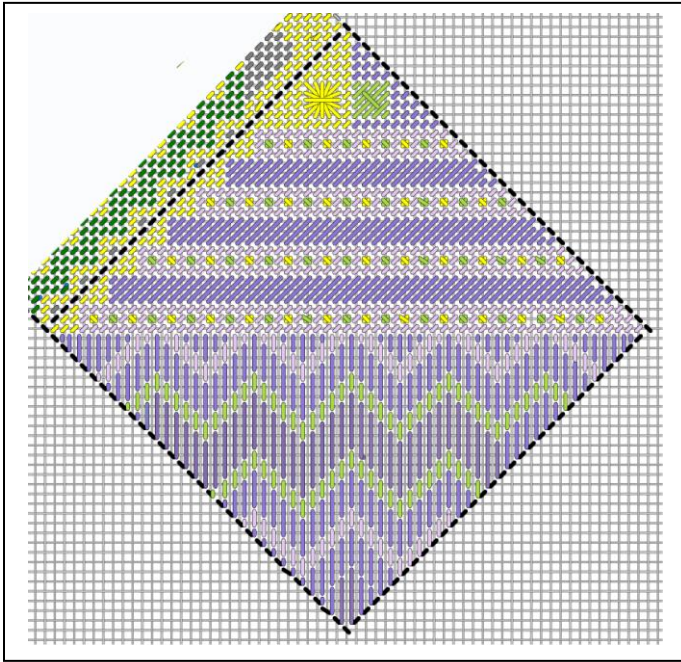
Step 6

Under the green, medium purple over 6 threads.

Then the pattern over 2 threads with green.
Pattern over 4 with the medium purple
Pattern over 2 with the light lavender.
Pattern over 4 medium purple for the rest.
Fill in the top with medium purple.

**The trick here is that last light lavender row.
Looks like a "W" with vertical over 2 showing.
Left side has tiny dark lavender
compensation stitch.**





Linda's canvas.. waste knots, cute cat needle magnet...

Join the discussion on facebook **CAThedral by Kay**. Send a message to Sandy with Peacock Alley to join or Blue Dogwood Designs.

Your friends and fellow 'pointers' can sign up for the newsletter with instructions and other bits of stitchery news on my website where it says "Join Email List".

The full list of threads is on my website Blink page.

Best, My best friends are stitchers,

Kay @ Blue Dogwood Designs

Questions? Email me at Email@BlueDogwoodDesigns.com