

CAThedral

an original Needlepoint project from Blue Dogwood Designs



June 2013



Area 5 and 6 - Top triangles

Just starting? Either draw your canvas from the instructions January 2013 Stitchguide or purchase a line drawn canvas.

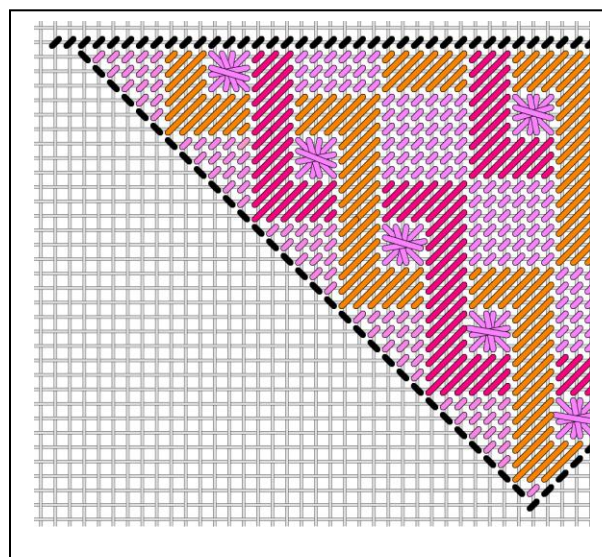
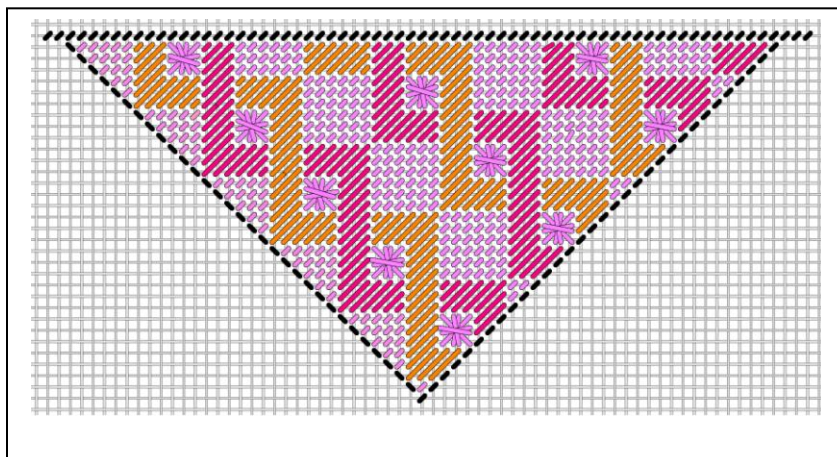
<https://bluedogwooddesigns.com/product/cathedral/>

Facebook has group called **CAThedral by Kay**.

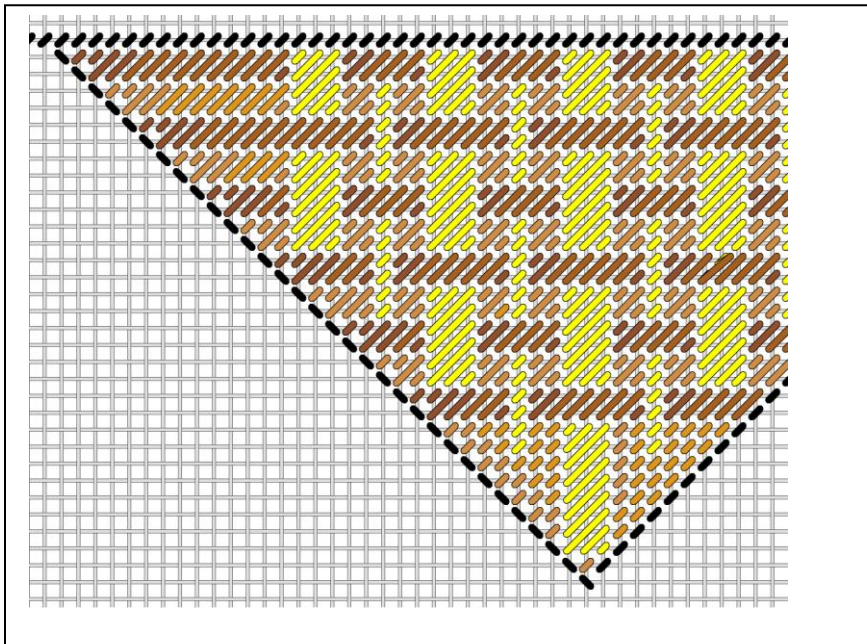
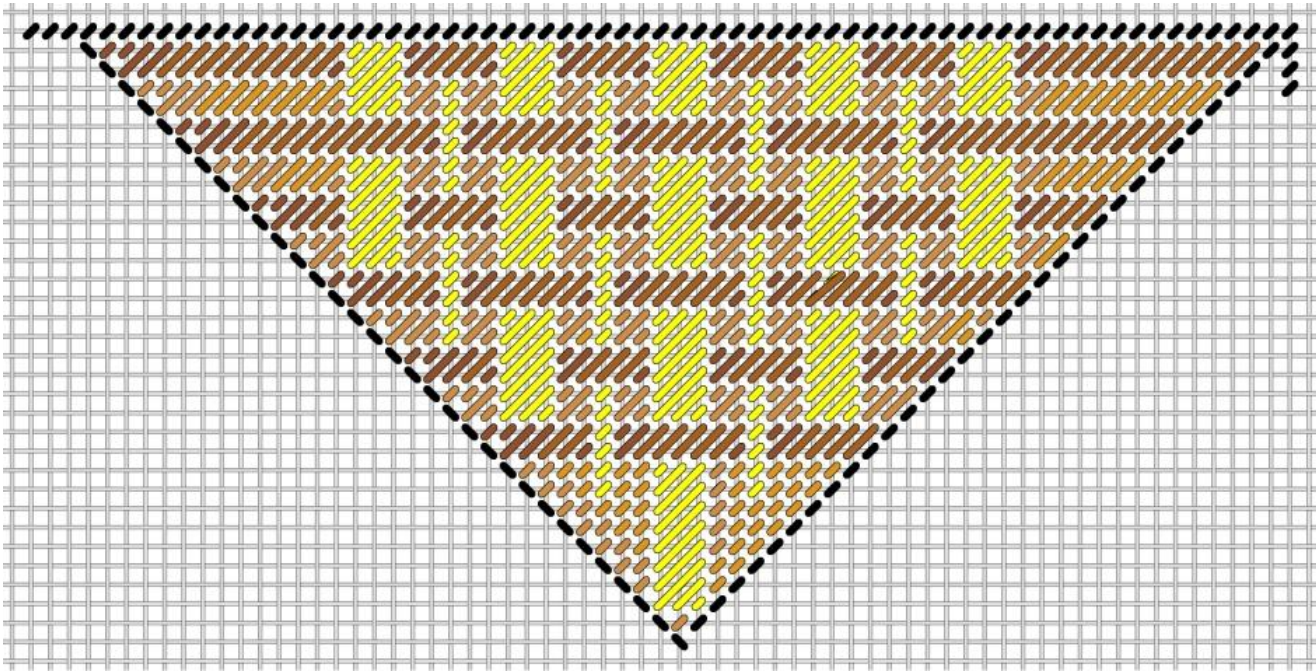
Area 5

Diagram colors	Thread	Color	Floss color
Pink	Trio Cotton Candy T72 - 1 ply	Pink	DMC 3806
Orange	Vineyard Pomegranate C125 - as is	Orange red	DMC 350
Dark Pink	Trio Cosmopolitan T185 - 1 ply	Darker pink	Anchor 3607

Start top left with the tent stitches with Trio Cotton Candy 1 ply
Leviathan stitch is also Trio Cotton Candy 1 ply
That will set you up for the diagonal gobelin over 3 weave pattern with the Vineyard Pomegranate (as is) and Trio Cosmopolitan (1 ply).



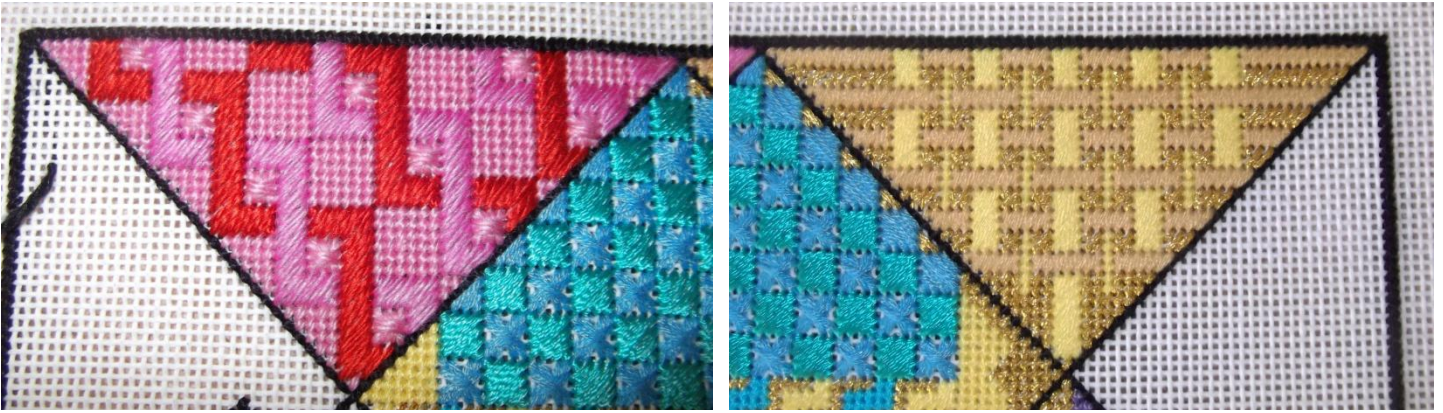
Area 6



1. Stitch the Mandarin yellow (yellow on graph) bottom to top starting at the point. That gets you centered.
2. Stitch the Mandarin butterscotch (dark brown on graph) horizontally 4 ply right to left from the top to bottom.
3. Stitch the Gold Kreinik (medium tan on graph) horizontally right to left from the top down.

This notion to stitch these horizontal stripes: stitching right to left, with the needle up in LA and down in NY, gives that full coverage on the back - which is preferred. 'Cover the back, cover the front' - good especially when stitching a non-painted canvas. Make that 'cover the back' adjustment if you are going left to right. I call this 'taking the long way home'.

Diagram colors	Thread	Color	Floss color
Dark brown	Mandarin Floss M842 - 4 ply	Butterscotch	Anchor 875
Yellow	Mandarin Floss M 859 - 4 ply	Yellow	Anchor 295
Medium tan	Kreinik 002J #12 Br	Bright gold	gold



I know, I know.... Linda W and her away knots... she loves them, they go away, she is the stitcher. Just go with it.

Best, My best friends are stitchers,

Kay @ Blue Dogwood Designs

Questions? Email me at Email@BlueDogwoodDesigns.com