

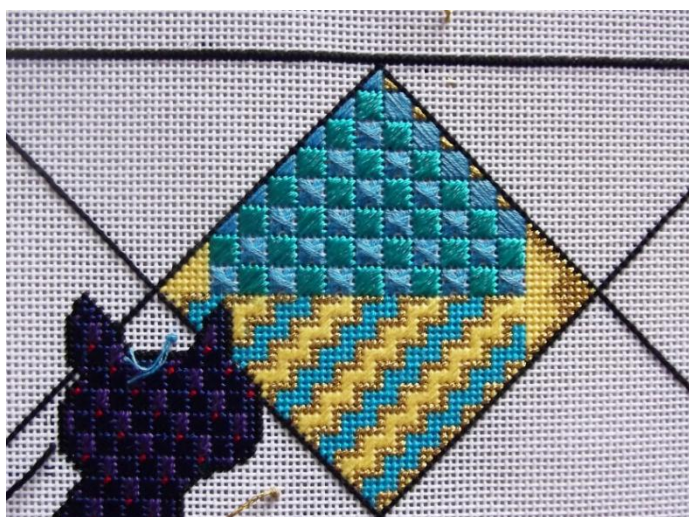
CAThedral

an original Needlepoint project from Blue Dogwood Designs



March 2013

(3/12/13 correction Step 6)



Area 2 - The first window! A little bit of sunshine!

Just starting? Either draw your canvas from the instructions January 2013 Stitchguide or purchase a line drawn canvas for \$21 plus shipping.

<https://bluedogwooddesigns.com/product/cathedral/>

Facebook has group called **CAThedral by Kay**. Send me a note or Sandy of Peacock Alley if you would like to join.

Step by step, follow along. Colors and patterns will emerge.

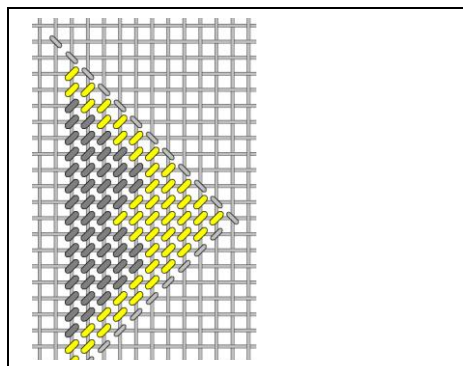
The 3 blues are somewhat close in color. Use these or choose from your stash. Keep the yellow and gold.

Welcome to the CAThedral project - let the sun peak in! Area 2

Diagram colors	Thread	Color	Floss color (Anchor unless noted DMC)
Yellow	Kreinik 002J #12Br	Bright gold	Gold
Grey	Mandarin Floss M859	Sun yellow	295
Turquoise	Neon Rays N116	Turquoise	187
Blue	Mandarin Floss M888	Medium blue	433
Green	Mandarin Floss M828	Caribbean blue	DMC 3845

Step 1

On the right corner of the diamond,
Use the Kreinik 002J for the yellow stitches.
Use the yellow Mandarin floss 859 4 ply for the grey stitches.
The whole area comes out 10 stitches from the point.



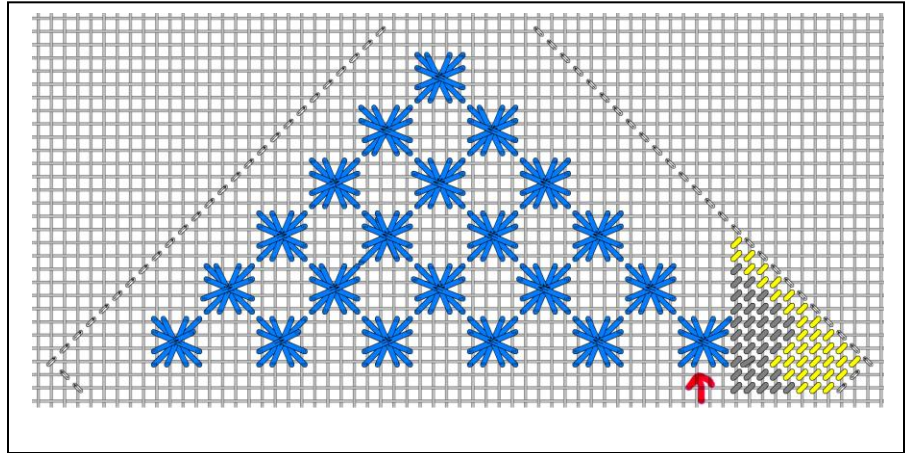
Step 2

Use Mandarin Floss M888 medium blue 3 ply and make these triple crosses.

Not a stitch in every hole.

The bottom of the row shares that center line. Note, they will look offset.

Start with the triple cross that is closest to Step 1 at the red arrow.

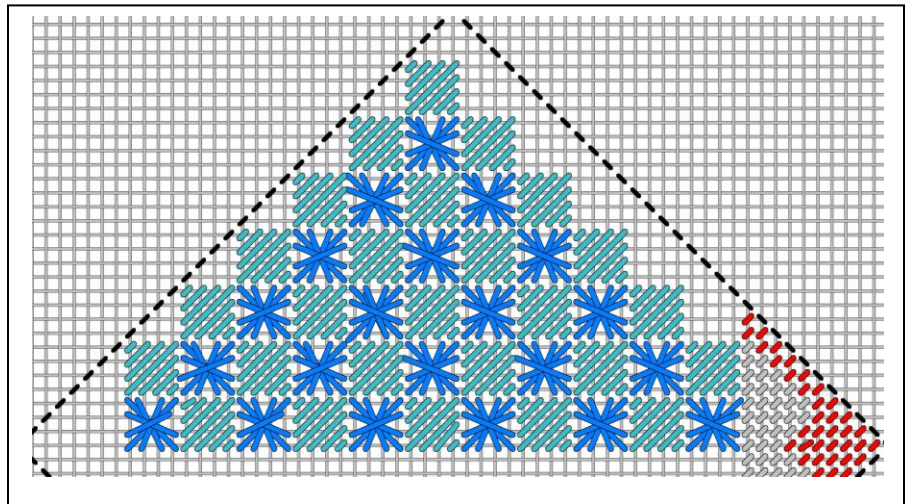


Step 3

Use turquoise Neon rays N116 and add in the turquoise stitches.

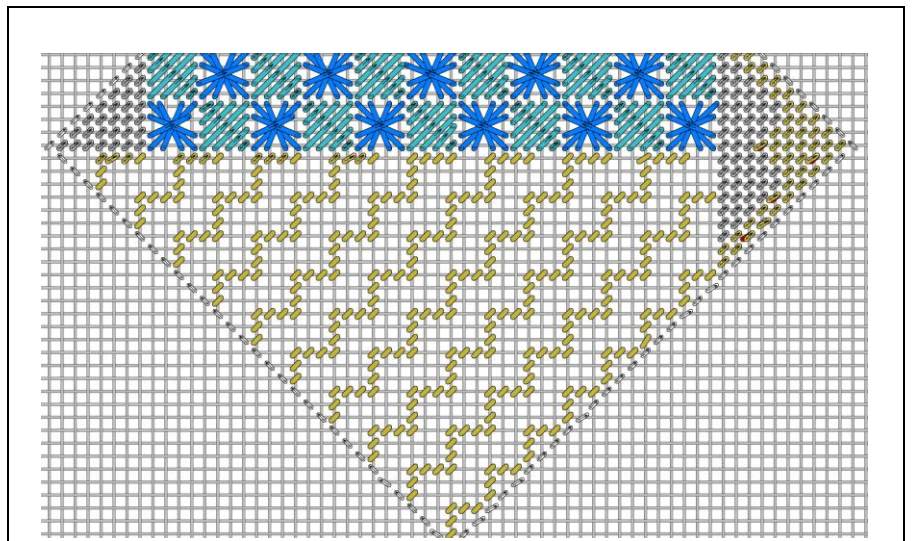
See how they make a full square on the left edge. Still more space on the right. It's okay.

Just ignore those red stitches on the diagram that are really yellow already stitched with Kreinik... my bad.



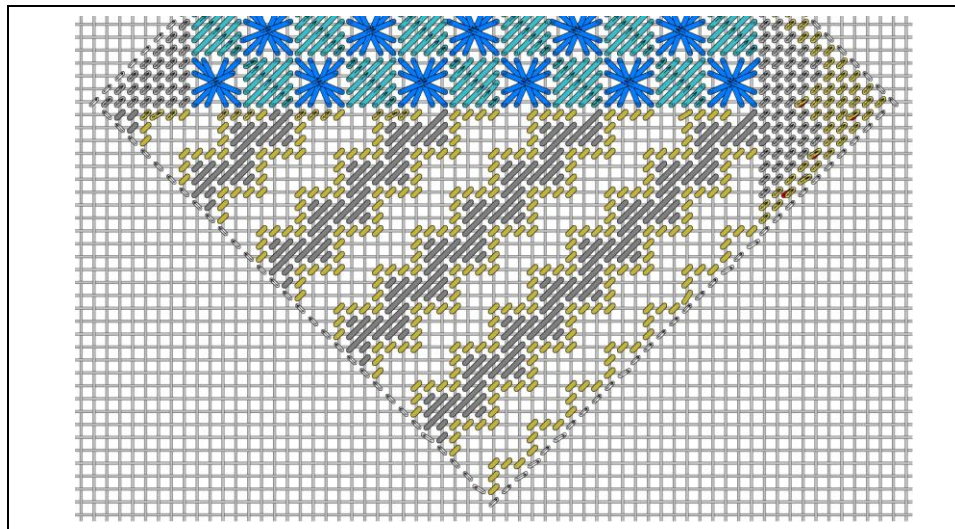
Step 4

Use Kreinik 002J gold for this pattern of yellow stitches



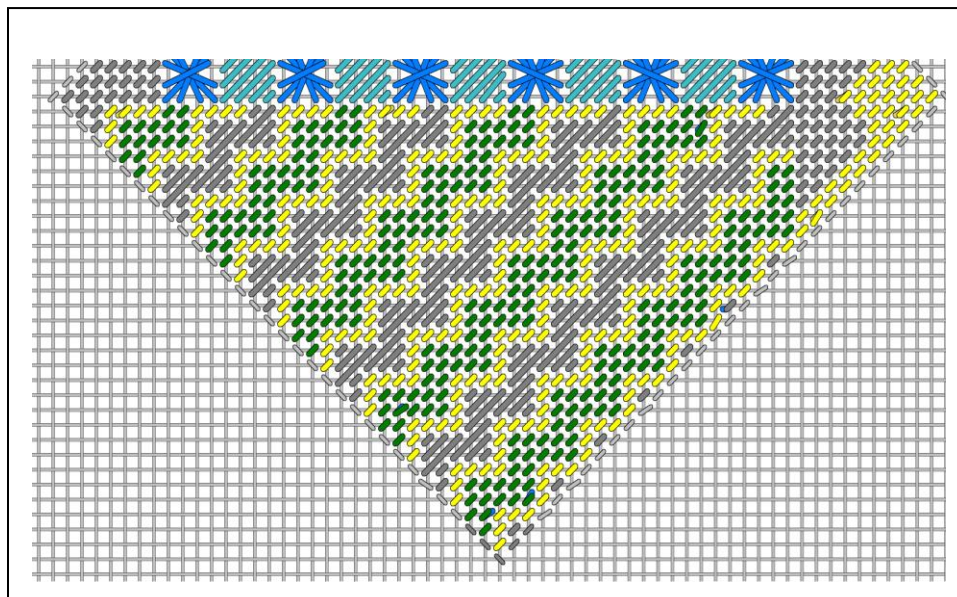
Step 5

Use the Mandarin floss
M859 yellow 4 ply for these gray stitches



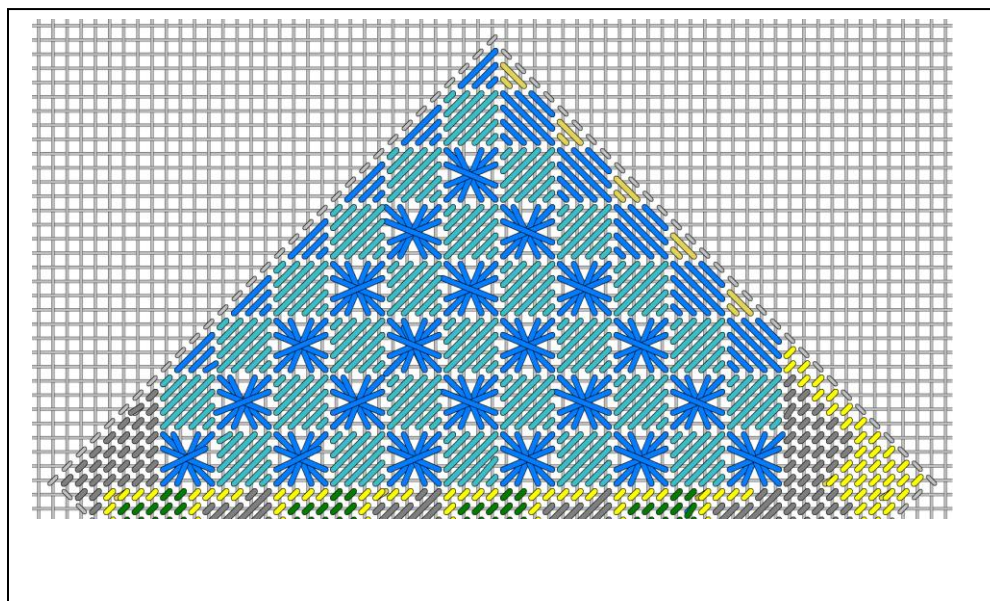
Step 6

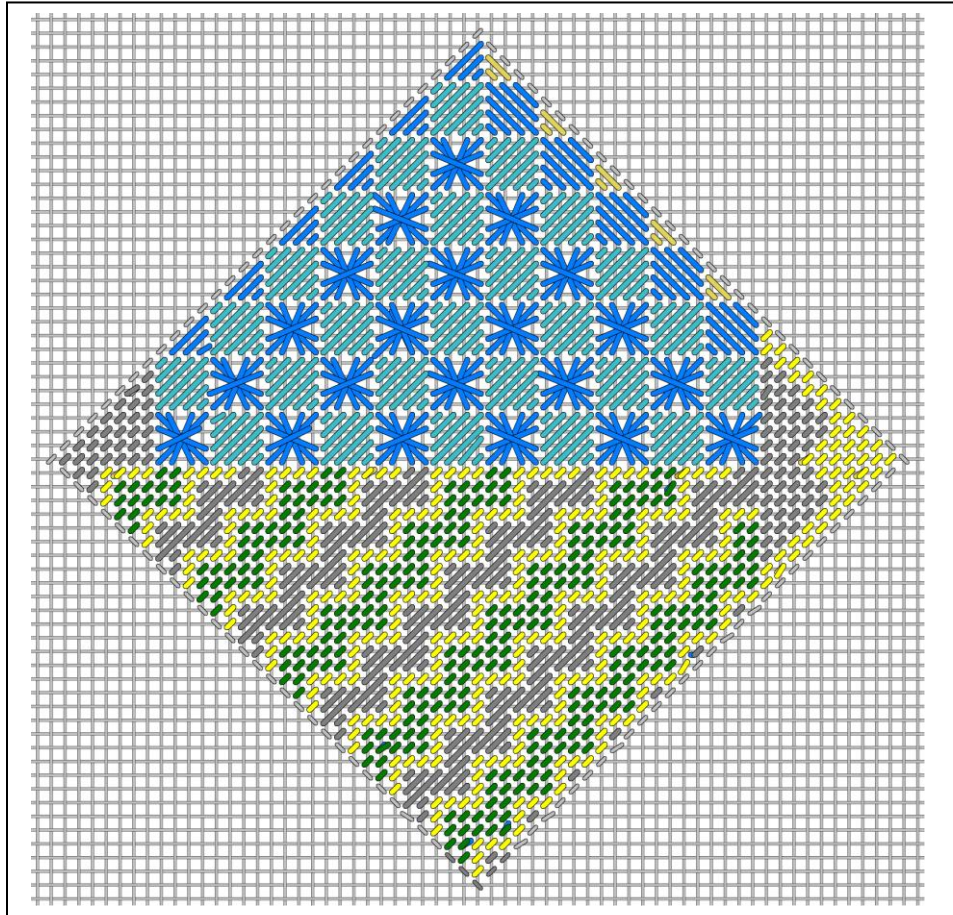
Use Mandarin floss 828
4 ply medium blue fill in tent stitches
shown here in green
(Correction 3/12/13 by Debra B- original
said Mandarin floss 888)



Step 7

Use the Mandarin floss 888 4 ply
and Kreinik to fill in the top edges





Join the discussion on facebook **CAThedral by Kay**. Send a message to me or Sandy with Peacock Alley to join.

Your friends and fellow 'pointers' can sign up for the newsletter with instructions and other bits of stitchery news on my website where it says "Join Email List".

The full list of threads is on my website Blink page.

Best, My best friends are stitchers,

Kay @ Blue Dogwood Designs

Questions? Email me at Email@BlueDogwoodDesigns.com